

Scarborough Community of Toronto
Chess News & Views

Newsletter of / Le Journal de
Scarborough Chess Club

“ FRIENDLY Chess Since 1960 ”

ITEMS OF INTEREST TO BOTH MEMBERS & NON-MEMBERS

Issue # 9 - 6 – November 15, 2007

Do You Know ? / Savez-Vous ?

CFC Financial Woes Grow

The CFC financial statements for 2 years ago (2005-6 – appended to 2006/7 GL # 1) show a loss of \$ 27,871. The year before that (2004-5) it was \$ 16,277. This is an INCREASE in loss of approx. \$ 11,500 !

In the fall of 2006, 2006/07 GL # 3 appended the unaudited financial statement for the first 6 months of the last full fiscal year, 2006-07 – May 1/06 – Oct. 31/06 (this past fiscal year ended April 30/07, with tax return due Oct. 31/07). This showed a loss of \$ 36,591 for 2005-06 for the first 6 months !

With the preliminary figures for full 2006-07, the loss has INCREASED AGAIN by over \$ 13,000 to \$ 49,950 (though Bob Gillanders, CFC Treasurer, notes that " the loss includes \$ 12,490 for roof repairs on the building "). Obviously the Mallon/Doubleday teams were unable to stem the increased bleeding (then CFC President Bill Doubleday at the 2007-08 AGM in July had very wrongly predicted a loss of about \$ 25,000).

The situation is obviously critical, given the killing trends that have now been consistent over the last number of years - dropping membership, dropping rating fees, dropping retail sales, etc..

Has the current executive any plans for reversing any of these trends? Their task is

SCTCN&V Website : <http://scarboroughchess.webhop.net>
SCC e – mail : info@ScarboroughChessClub.ca SCC Website : <http://www.ScarboroughChessClub.ca>
Jack Goodlad Community Ctre, 929 Kennedy Road
(½ way between Eglinton Ave. and Lawrence Ave.)

looking daunting. Are we again looking at some type of draconian cuts to try to reduce the expenditure side of the equation? It would look like an increase in membership fees proposed by the current executive is absolutely necessary. Recently the Treasurer has put forward a proposal that the Chess Foundation give to the CFC not only interest on their capital, but also a portion of the capital from life memberships, to cover costs of servicing life members. This may or may not get approval, but at least it is some attempt to bring new solutions to the table.

It will certainly help if CFC President Hal Bond/the current executive/the Governors can issue a " plan " outlining the steps they intend to take to try to reduce the losses_(we cannot withstand simply a stemming of the increase in losses; the overall losses have got to go down significantly or CFC is in trouble).

The Les Bunning Crisis Fund

Given the critical financial situation of the CFC (the Treasurer has warned of a cash flow problem in Feb./08 if nothing changes), past CFC President Les Bunning posted on ChessTalk on Nov. 2 :

“ The CFC has fallen on hard times and urgently needs cash donations. It is common for many non profit organizations in the Arts and Sports to have fund raising drives. I want 50 people to match my donation of \$200 with the goal of raising \$10,000. Please post your reply on Chess talk. Chess clubs should try to raise \$500. How about \$500 from Chess and Math! If the CFC receives \$10,000 in donations by Christmas I will raise my donation to \$500. I know that the CFC has not endeared itself to chess players recently. Attempted cut backs have resulted in reduced service and much dissatisfaction. The current CFC executive is working hard to correct this situation. If you are a chess player (why else would you be reading ChessTalk) your help is needed. “

I felt this was a very timely and necessary initiative, and so also on Nov. 2 answered with a post as follows:

“ I believe we have a good current executive, and they need time to try to correct this critical situation. They have accomplished some organizational things for the first 6 months of the 2007-8 fiscal year (they've been in for 4 of the first 6 months), though I have seen no current financial information for the first 6 months, ending October 31, to determine whether they have been able to lessen the loss trend.

According to Bob Gillanders, CFC Treasurer, CFC faces a cash crunch in February 2008 if nothing is done. I would like to see CFC get by this chasm at least. It seems Les believes \$ 10,000 would give the executive the breathing room they need.

So I am willing to match Les' donation of \$ 200, and will be presenting Hal Bond with a cheque this weekend.

We all recognize that a long term solution is still required, and this is only a one-time

stop-gap measure. But it may give the needed time for some improvements to occur.

I hope others will also agree with Les' fund-raising proposition, and join us in donating..."

Others have now posted on ChessTalk that they also will make a \$ 200 donation (and some more !).

If you care about the CFC, and want to give the new Hal Bond team time to try to improve the situation, then seriously consider donating to this new fund, to help the CFC get through its cash flow problems in the early New Year (the CFC can issue charitable donation tax receipts).

European Team Championships

This tournament saw very strong country teams, with leading players on top boards. In the national tournament, Russia came first. The best player of the tournament was Peter Svidler who played first board for Russia, scoring 6/7 pts., and a performance rating of 2989. Where was THIS Svidler for the recent 2008 World Chess Championships, where drawing was his norm? Armenia was second and Azerbaijan third. In the Women's tournament, the winner again was Russia. Second was Poland, and third was Armenia.

Guelph Fall 50-50 Pro-Am

60 players registered for this 4 section, 5-round swiss, with an experimental time control of Game/50 min. (with 50 sec. increment from move 1). Your editor played and found the time control fine (love increments) – it is not that much faster than our SCC Game/90 min. Another well-run tournament by the team of Hal Bond/ Patrick McDonald and their volunteers. They even had some games in the top 2 sections broadcast live on the internet using their own MonRoi set up.

The winners were:

Pro Section – 1st – IM Artem Samsonkin – 4.5 pts.

2nd / 4th – 3.5 pts. – GM Bator Sambuev (Russia)

Roman Sapozhnikov

Victor Plotkin

U 2100 – 1st/3rd – 4.0 pts. – Inigo Francis Assaripallam (first on tie-break)

Ralph Deline (second on tie-break)

Jesse J.B. Wang (third on tie-break)

(honourable mention should go to Oscar Villalobos, SCC member, who came 4th with 3.5 pts., drawing Inigo, a pawn up, in the last round)

U 1800 – 1st/2nd – 4 pts. – Ross Cunningham (first on tie-break)

Mario Moran-Venegas (second on tie-break – SCC member !)

3rd – 3.5 pts. – Brendon Lee

SCC had a good contingent present at this tournament:

Pro Section – Alex Ferreira - .5 pts.
U 2100 – Oscar Villalobos – 3.5 pts.
 Bob Armstrong – 3 pts.
 Joe Bellomo – 2.5 pts.
 Doug Gillis – 2 pts.
U 1800 – Mario Moran-Venegas – 4 pts.
U 1500 – Dinesh Dattani – 3.5 pts.

SCC Fall Swiss – New Tournament Started

Thursday, November 1, SCC started a new 8 round, 2 section (1700 & Over/ U 1700) swiss. Again for this swiss, we had over 50 registrants; the top section had 28 players, and the lower section 24 players.

After 2 rounds, 3 players in the top section have perfect scores: junior girl expert, Yuanling Yuan, newcomer expert Cassius Marsh, and, surprisingly, C class player Lui Morra (go Lui !). In the lower section there are 3 players with perfect scores : new junior Jerry Z.S. Wang, new member Jeff Seedhouse, and returning junior Arvin Farhang.

Rd. 1 saw a rash of upsets in the top group: Josh Sherman drew expert John Hall; your editor, Bob Armstrong, beat A player Randy Moysoski; Aaron Wu beat A player Jim Paterson; Oscar Villalobos beat expert Alex Rapoport; Lui Morra beat A player John London; Sam Arfin beat A player Rick Garel; Silvano Mesiti beat A player Will Rutherfordale.

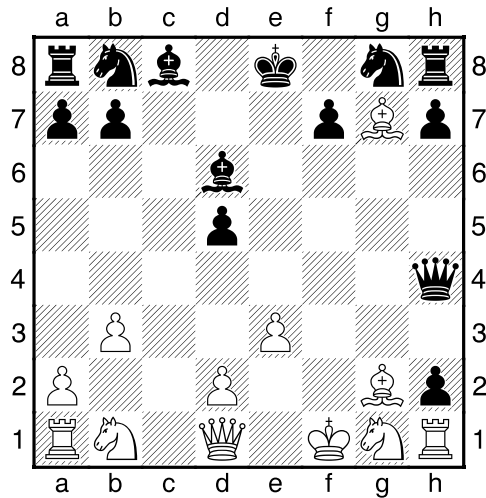
In a wild opening, Josh had a win, but missed it, and eventually came out down 2 pawns and was lost. But John Hall went for his Q, and after winning it, Josh had a perpetual check with his R. Here is their game (Annotations by Bob Armstrong, using Fritz):

Hall, J (2112) – Sherman, J (1765) [A01]

SCC Fall Swiss (1700 & Over) Toronto, Cana (1), 01.11.2007

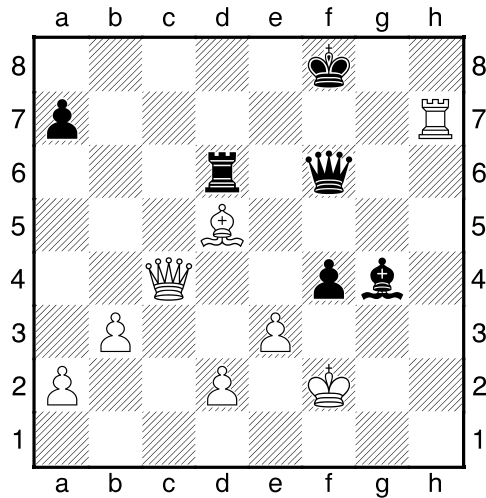
1.b3 d5 2.e3 Josh gets the early advantage (according to Fritz' opening theory) [2.Nf3=] **2...e5**
3.Bb2 Bd6 4.c4 c6?!= [4...Nf6 5.cxd5 Nxd5 6.Nc3 Be6] **5.cxd5?!=** [5.Nf3 Qe7 6.cxd5 Nf6! Fritz prefers the gambit line 7.dxc6 and says best to accept the gambit 7...Nxc6=] **5...cxd5?!=** unusual for Josh not to play the gambit line ! [5...Nf6! 6.dxc6 Nxc6] **6.f4 exf4** now it will start getting kind of wild. [6...Nc6 7.Nf3 f6 8.fxe5 fxe5=] **7.Bxg7??-+** how can this be a game-losing move? [7.Bb5+ Bd7 8.Bxd7+ Nxd7 9.Bxg7 Be5 10.Bxh8 Bxh8= John would be up the exchange] **7...Qh4+ 8.g3 fxd3 9.Bg2 gxh2+ 10.Kf1**

Position after 1.Kf1



hxg1Q+?!± how can getting 2 Q's be bad? Josh misses his win ! John gets a " clear " advantage. [10...Bf5! 11.Qe2 Nf6! 12.Bxh8 Ne4 13.Nf3 Qg4 14.Ke1 Qg3+ 15.Kf1 Qg8 16.Qb5+ Bd7 17.Qxd5 Bc6 18.Qd3 Ng3+ 19.Kf2 Nxh1+ 20.Bxh1 Bg3+ 21.Kf1 Qxh8+ Josh would be up a passed P on the 2nd rank when the smoke clears] **11.Kxg1 Qg5 12.Bxh8** John is up the exchange, with Josh having a P compensation. **12...Bg4 13.Qf1 Nc6?!+-** 1.87 Josh is bound to lose P's – the dP, cP, and hP are all vulnerable. [13...h5?! 14.Nc3 Nc6 15.Nxd5 0-0-0 16.Qxf7 Rd7 17.Qf2 Rh7+- 1.92 Josh would be down the exchange + P; 13...Qg6 14.Nc3 Nc6 15.Rc1 Ba3 16.Re1 Bf5 17.Nxd5 0-0-0± Josh would be down the exchange] **14.Rxh7** John is up the exchange **14...0-0-0 15.Nc3?!+-** John wrongly goes for the dP, rather than the fP [15.Qxf7 Nge7 16.Bf6 Qg8 17.Bxd5 Be6+ 18.Qxg8 Rxc8+ 19.Bg2 Nd5 20.Bg7 Be5 21.Bxe5 Nxe5+- 3.27 John would be up the exchange + 2 connected passed P's] **15...f5?!+-** 2.47 not a good move....but the ending will show it is very fortuitous [15...Bh5 16.Nxd5 Bg6 17.Rh1 Be4+- 1.66] **16.Nxd5** John is up the exchange + P **16...Qg6?+-** 4.97 [16...Rd7 17.Rxd7 Kxd7 18.Nf4 Nge7+- 2.90] **17.Rh1?!±** [17.Rg7 Qe6 18.Qc4 (18.Rxb7?! Rd7 (18...Kxb7??? 19.Qb5+ Kc8 20.Qxc6+ Kb8 21.Qb5+ Kc8 22.Rc1+ Bc5 23.Rxc5+ Qc6 24.Qxc6+ Kb8 25.Rb5#) 19.Qa6 Rxb7 20.Qxc6+ Kb8 21.Nb4 Bh2+ 22.Kxh2 Rh7+ 23.Kg3 Qxc6 24.Nxc6+ Kc7 25.Be5+ Kd7+- 8.58) 18...Qe8 19.Rxb7! Kxb7 20.Qb5+ Kc8 21.Rc1 Bh2+ 22.Kxh2 Rd6+- 9.64] **17...Nge7?!+-** [17...Bb8 18.Nf4 Bxf4 19.exf4 Rxd2± John would be up the exchange] **18.Nxe7+ Nxe7 19.Rc1+ Nc6?+-** 2.93 [19...Kb8 20.Bd4 Nd5 21.Qf2 Rg8+- 1.53] **20.Rxc6+!** John decides to sac the exchange back for a P, and a won ending **20...bxc6 21.Qa6+ Kd7 22.Qxc6+** John is up 2 P's **22...Ke7 23.Be5 Kf7??+-** leads to mate [23...Bh5 24.Qd5 Qg5 25.Rh3 Rd7+- 3.64] **24.Bxd6?+-** [Here is the computer calculated mate 24.Bd5+ Ke7 25.Bxd6+ Rxd6 26.Qc7+ Kf6 27.Qxd6+ Kg5 28.Qf4+ Kf6 29.Qd4+ Kg5 30.Bf7! Bh5 (30...Qxf7?? 31.Qf4+ Kf6 32.Qd6+ Qe6 33.Rh6+ Kg7 34.Qxe6 Kf8 35.Rg6 f4 36.Rg8#) 31.Qd8+ Kh6+ 32.Bxg6 Kxg6 33.Qe8+ Kf6 34.Rxh5 a5 35.Rh6+ Kg7 36.Rg6+ Kh7 37.Qg8#] **24...Rxd6 25.Qc7+ Ke6 26.Qc4+ Ke7 27.Qb4?+-** 2.65 [27.Rh8 f4 28.Rg8 Qb1+ 29.Bf1 Bd7+- 4.72] **27...Ke6?+-** 3.73 [27...Bf3 28.Rh2 a6 29.Kf1 Bxg2+ 30.Rxg2 Qh6+- 3.13] **28.Kf2 Qf6?+-** 4.99 John is slowly building his winning advantage, up 2 P's. [28...Bh5 29.Qc4+ Kd7 30.d4 Qg4+- 4.13] **29.Qc4+ Ke7 30.Rh7+ Kf8 31.Bd5 f4!!** a key move for the denouement of this saga, setting a deadly trap

Position after 31...f4



32.Rf7+??= a major blunder – winning the Q is definitely NOT ON ! [32.exf4 Be6 33.Bxe6 Rxe6+- 5.71] **32...Qxf7 33.Bxf7** John is up Q + 2 P vs R, and the game is drawn ! **33...Rxd2+ 34.Ke1** the K cannot flee to g3 because of the wonderful fP ! **34...Rd1+ 35.Kf2 Rd2+ 36.Ke1=** drawn by perpetual ½-½

Also in the top group in Rd. 1, another upset saw Lui Morra execute a nice K-side mating attack against John London. Here is their game (Annotations by Bob Armstrong, using Fritz):

Morra, L – London, J (1826) [B40]

SCC Fall Swiss (1700 & Over) Toronto, Cana (1), 01.11.2007

1.e4 c5± 2.Nf3 e6 3.d4 cxd4 4.Nxd4 Nf6 5.Nc3 Bb4 6.Bd3?!= [6.e5 Nd5 7.Bd2 Bxc3 8.bxc3 0-0±] **6...Nc6** [6...d6?! 7.0-0 Nc6 8.Ncb5 0-0 9.c3 Bc5 10.Nb3 Bb6 11.Bc2 Ne8±] **7.Nxc6 dxc6 8.0-0** [8.e5 Nd7 9.Bf4 g5 10.Bg3 Bxc3+ 11.bxc3 h5=; 8.Qf3 Qe7 9.0-0 e5 10.a4 0-0=] **8...Qc7 9.Bg5** [9.Qf3 Be7 10.Rd1 0-0 11.Be2 Bd6 12.Kh1 Be5=] **9...Qe5?!±** [9...Bd6 10.h3 Bd7 11.Qe2 h6 12.Be3 0-0=] **10.Bd2** [10.f4 Qc5+ 11.Kh1 e5 12.Qf3 Be6±] **10...0-0?!±** Lui gets a " clear " advantage [10...Bd6 11.g3 Qc5 12.Na4 Qd4 13.b3 Be7±] **11.a3?!±** [11.Qe2 Rd8 12.Rad1 Nd7 13.f4 Qa5±] **11...Bd6 12.f4 Qd4+ 13.Kh1 Bc7??+-** allows the driving off of the Bl K's lone defender; an attack is brewing. Lui gets a " winning " advantage [13...e5 14.f5 Rd8 15.Qe1 Bc5 16.b4 Be7±] **14.e5 Nd5 15.Qh5?!±** aggressive [15.Nxd5 Qxd5 16.Qh5 f5 17.Rf3 g6 18.Qh6 b6+-] **15...g6 16.Qh6 Ne7??+-** 6.02 John needs breathing room.f5 is called for [16...f5 17.Ne2 Qb6 18.Rad1 Ne3 19.Bxe3 Qxe3 20.Rf3 Qc5±] **17.Ne4 f6** 8.98 [17...f5? 18.Ng5 Rf7 19.Nxf7 Kxf7 20.Qxh7+ Kf8+- 10.41] **18.Nxf6+??+-** 4.31 Lui goes up a P [best is 18.Bb4 Bd8 19.c3 Qxe4 (19...Qd7? 20.Nxf6+ Rxf6 21.exf6 Kf7 22.Qg7+ Ke8 23.f7#) 20.Bxe4 Rf7+- 11.27] **18...Rxf6 19.Bc3 Qd7 20.exf6** Lui is up the exchange + P **20...Nf5** 8.95 [20...Nd5? 21.f5 Bf4 22.Rxf4 Nxf4 23.fxg6 Nxg6 24.Bxg6 e5 (24...hxg6?? 25.f7+ Kxf7 26.Rf1+ Kg8 27.Rf8#) 25.Rf1 Qf7 26.Bxf7+ Kxf7 27.Qxh7+ Ke6 28.Qe7+ Kd5 29.Qxe5+ Kc4 30.b3#] **21.Bxf5 exf5 22.Rfe1** John resigns. It is mate **22...Bd6 23.Re8+ Kf7 24.Rae1 Qe6 25.R1xe6 Bxe6 26.Re7+ Bxe7 27.Qg7+ Ke8 28.Qxe7# 1-0**

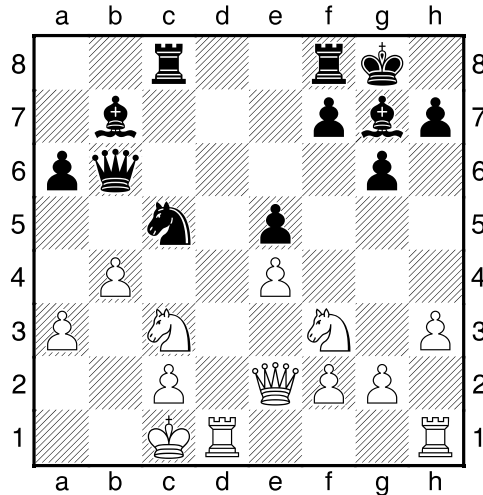
In the U 1700 section, new member Hassan Pishdad ran into new junior Kevin Wu and some tactical fireworks ensued, with Kevin eventually going up 2 minor pieces vs 2 pawns. Here is their game (Annotations by Bob Armstrong, using Fritz):

Pishdad, H – Wu, K (1481) [A48]

SCC Fall Swiss (U 1700) Toronto, Cana (1), 01.11.2007

1.Nf3 Nf6 2.d4 g6± 3.Bf4 d6 4.Nc3 Bg7 5.h3 [5.Qd2 Bf5 6.Nh4 Be6 7.e4 0-0 8.Bh6 Bxh6 9.Qxh6 c5±] 5...Nbd7 [5...Nh5 6.Be3 Nf6 7.Qd2 Bf5 8.0-0-0 h6±] 6.e3?!= [6.Qd2 b5 7.Bh6 0-0 8.Bxg7 Kxg7 9.Nxb5 c5±] 6...a6 [6...0-0 7.Be2 Nh5 8.Bh2 c5=] 7.Bd3 b5 8.a3?!≠ Kevin gets the advantage [8.a4 b4 9.Ne4 0-0=] 8...Bb7 9.Qe2 [9.0-0 c5 10.Re1 Rc8≠] 9...c5 10.dxc5 Nxc5 11.0-0-0?+- this loses a piece. Kevin gets a "winning " advantage [11.e4 Nfd7 12.Qd2 f5 13.exf5 Nxd3+ 14.cxd3 gxf5≠] 11...e5 Kevin is eyeing thee4 push. [11...Qa5 12.Bg5 b4 13.axb4 Qxb4+ (13...Qa1+? 14.Kd2 Nfe4+ 15.Nxe4 Nxe4+ 16.Bxe4 Qxb2 17.Bxb7 Qc3+ 18.Kc1 Qa3+ 19.Kd2 Bc3+ 20.Kd3 Be5+ 21.Ke4 Qxb4+ 22.Rd4 Qxb7+ 23.Kd3 0-0 24.Kd2 Rfc8 25.Rc1 Bxd4 26.exd4 Qb4+ 27.c3 Qa3=)] 12.Bxe5 Hassan must lose a piece somewhere [12.Bxb5+ axb5 13.Bxe5 0-0 (13...dxe5? 14.Rxd8+ Rxd8 15.Qxb5+ Nfd7 16.b4 Rb8 17.Qc4 Ne6±) 14.Qxb5 Ra5 15.Qb4 Qa8+] 12...dxe5 13.Bxb5+ Ncd7 14.Bxd7+ Nxd7 Kevin is up B vs 2 P's 15.e4 0-0 16.Qc4 - 2.38 [16.h4 h6 17.h5 g5 18.Qe3 Rb8 19.Nxg5! (19.Rd6 Qe7 20.Rhd1 Nf6+- - 2.52) 19...hxg5 20.h6 Bf6 21.Qf3 Be7+- - 2.11] 16...Rc8 17.Qd3 Nc5 18.Qe2 Qb6 19.b4?+- - 4.51 leaving the c3N hanging, and allowing a tactical shot by Kevin [19.Nd2 Ne6 20.Qe3 Nd4 21.Rhe1 Rc7 22.Kb1 Bh6 23.Qd3 Rfc8+- - 4.02]

Position after 19.b4



19...Nb3+! - 4.12 a good tactical shot, though not the very best move in the position [19...Ne6 20.Kb2 Nd4 21.Qd3 Rxc3! 22.Kxc3 Rc8+ 23.Kd2 Rxc2+ 24.Ke1 Re2+ 25.Qxe2 (25.Kf1? Bxe4 26.Qc3 Rc2 27.Qe3 Qc6 28.Re1 Bxf3 29.gxf3 Nxf3 30.Rd1 Rc3 31.b5 axb5 32.Qa7 Qc4+ 33.Kg2 Nh4+ 34.Kg1 Qe4 35.Rh2 Rxh3+- - 23.74) 25...Nxe2 26.Kxe2 Qb5+ 27.Ke1 Bxe4+- - 6.40] 20.Kb2?+- - 5.11 [20.cxb3 Rxc3+ 21.Kb2 Rfc8 22.Rc1 Qc6 23.Qd2 Rxc1 24.Rxc1 Qxc1+ 25.Qxc1 Rxc1 26.Kxc1 Bxe4+- - 4.27] 20...Nd4 21.Nxd4??+- - 8.69 this loses the N [21.Qd3 Rxc3! 22.Kxc3 Rc8+ 23.Kd2 Rxc2+ 24.Ke1 Re2+ 25.Qxe2 Nxe2 26.Kxe2 Qb5+ 27.Ke1 Bxe4+- - 6.40] 21...exd4+ Hassan resigned The continuation is 22.e5 Rxc3+- Kevin would be up 2 B's vs 2 P's 0-1

As well in the lower section, Masoud Jizan and newcomer Jeff Seedhouse played an interesting King's Gambit, with surprises at the end. Here is their game (Annotations by Bob Armstrong, using Fritz):

Jizan, M – Seedhouse, J [C34]

SCC Fall Swiss (U 1700) Toronto, Cana (1), 01.11.2007

1.e4 e5 2.f4 King's Gambit [2.Bc4=] **2...exf4** Jeff goes up the gambitted P [2...Bc5?! 3.Nf3 d6=] **3.Nf3 Nf6?!=** [3...g5 4.h4 g4 5.Ne5 Nc6 6.Nxg4 d5] **4.e5 Nh5 5.Nc3?!=** [5.Be2 d6 6.0-0 dxe5 7.Nxe5 Bc5+ 8.Kh1 Nf6=] **5...d5** [5...d6?! 6.d4 Be6=] **6.d4** [6.Be2 g5 7.0-0 Ng7 8.d4 Ne6] **6...Bb4?!=** [6...g5 7.Bd3 g4 8.0-0 Nc6 (8...gxf3?? 9.Qxf3 Qg5 (9...Ng7 10.Nxd5 Be7 11.Bxf4 c6 12.Nxe7 Qxe7 13.Be3 h6+- 2.41) 10.Nxd5 Kd8 11.Nxf4 Nxf4 12.Bxf4 Qg7+- 2.66) 9.Bb5 Be6] **7.Bb5+ Nc6?!=** for the first time, Masoud gets the advantage [7...c6 8.Bd3 g5 9.0-0 Bg4=] **8.0-0 9.Ne2?!=** Jeff gets back the advantage [9.Ne1 g6 10.Nd3 f6 11.Bxc6 Bxc3 12.Bxd5+ Qxd5 13.bxc3 fxe5 14.Nxe5 c5] **9...g5 10.c3** [10.b3 a6 11.Bxc6 bxc6; 10.Qd3 a6 11.Bxc6 bxc6; 10.a3 Be7 11.Bd3 f6 12.exf6 Bxf6] **10...Be7 11.Bd3** [11.b3 Bf5 12.Bd3 Qd7 13.c4 Be4] **11...f6 12.Qc2 Rf7 13.Bd2 Bg4** [13...fxe5?! 14.Nxe5 Nxe5 15.dxe5 Bc5+ 16.Kh1 Qe8 17.Rae1 Bb6=] **14.c4** [14.exf6 Bxf6 15.Rae1 Qd7 16.Bc1 Re8; 14.h3 Be6 15.exf6 Bxf6; 14.Rae1 Qd7 15.b3 Raf8] **14...Be6 15.Rae1?!=** Jeff gets a " winning " advantage [15.h3 Ng3 16.Nxg3 fxg3 17.Kh1 Qd7] **15...fxe5?** Jeff is losing his advantage [15...dxc4? 16.Bxc4 Bxc4 17.Qxc4 g4 18.e6 Rf8; 15...g4 16.cxd5 Qxd5+] **16.Nxe5?** [16.cxd5 Qxd5 17.Be4 Qxa2 18.Bxc6 bxc6 19.Nxe5 Rff8 20.Qxc6 Bd6] **16...Nxe5 17.dxe5 dxc4** Jeff goes up 2 P's **18.Be4 Bd5 19.Bf5?!=** - 1.77 Jeff gets back his " winning " advantage [19.Rd1? Bxe4 20.Qxe4 Qd3 21.Qxb7 Rd8 22.e6 Rf5 23.Rf2 Bc5 24.e7 Re8 25.Qf3 Rxe7 26.Qxd3 cxd3 27.Nc1 Rd5 28.Bc3 g4+- - 5.41; 19.Bc3 c6 20.Nd4 Bc5 21.Rf2 Qb6 22.e6 Rc7] **19...Bc5+ 20.Kh1 Qf8 21.Be4 Bxe4?** Jeff is losing his advantage again [21...c6 22.Bxd5 cxd5 23.Qc3 Qh6+] **22.Qxe4 Ng3+??=** this sac is just unsound. The N can just be captured by the N. Masoud gets a " clear " advantage [22...Re8 23.e6 Rf6 24.Qxc4 Qd6 25.b4 Qxd2 26.bxc5 f3 27.gxf3 Rxe6] **23.hxg3??=** a major blunder into mate [23.Nxg3 fxg3 24.Qxc4 Be7 25.Rf3 b5 26.Qb3 Kg7] **23...Qh6# 0-1**

In Rd. 2 on top board, master Bryan Lamb looked to be in control against A player, Oscar Villalobos, as he had the advantage for the first part of the game and was up a pawn. But on move 38, Oscar got the advantage, and developed a winning advantage, up 2 pawns ! But he faltered on move 55 in the ending, and gave Bryan a draw. Here is their game (Annotations by Bob Armstrong, using Fritz):

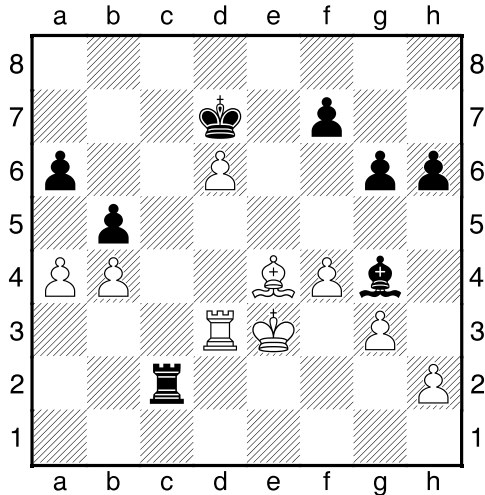
Lamb, B (2229) – Villalobos, O (1862) [A35]

SCC Fall Swiss (1700 & Over) Toronto, Cana (2), 08.11.2007

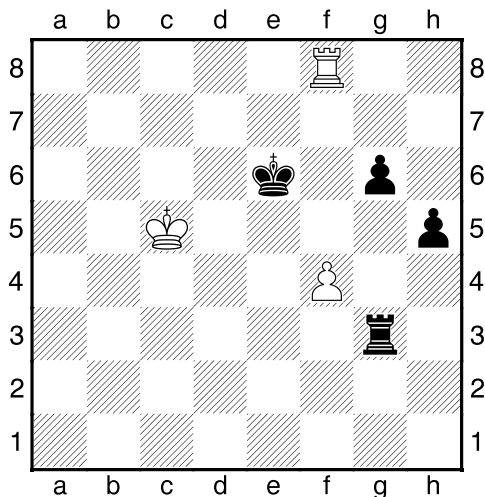
1.c4 c5 2.Nf3 Nc6 [2...Nf6=] **3.Nc3 g6 4.d4?!=** [4.e3 Nf6 5.d4 cxd4 6.exd4 d5] **4...cxd4 5.Nxd4 Bg7 6.Nc2** [6.e3 Nf6 7.Be2 0-0 8.0-0 d5=] **6...e5?±** Bryan gets an early " clear " advantage [6...Bxc3+ 7.bxc3 Nf6 8.Nb4 0-0=] **7.g3 Nge7 8.Bg2 0-0 9.Bg5?!=** [9.0-0 d6 10.Ne3 Nd4] **9...h6 10.Be3 a6** [10...d6 11.0-0 Be6 12.Qd3 Rc8 13.b3 f5] **11.Qd2 Nf5 12.Bc5** [12.h4 d6 13.0-0 Be6 14.g4 Nxe3 15.Nxe3 Rb8; 12.0-0 d6 13.h4 Be6] **12...d6 13.Ba3 Be6 14.b3 Qd7 15.Rd1 Rfd8 16.0-0 Rab8?!±** [16...b5 17.Ne3 bxc4 18.Nxc4 Rab8] **17.Ne4?±** Bryan loses his advantage [17.Ne3 Nce7 18.Ne4 b5 19.Nxd6 Nd4 20.c5 Bh3] **17...b5 18.Bxd6** Bryan goes up a P **18...Nxd6 19.Qxd6?!=** for the first time in the game, Oscar gets the advantage [19.Nxd6 bxc4 20.Nxc4 Qxd2 21.Nxd2 Rdc8=] **19...Nd4?±** [19...bxc4 20.Qxd7 Rxd7 21.Rxd7 Bxd7] **20.Nxd4 Qxd6** [20...exd4 21.Qxd7 Rxd7 22.Nc5 Rd6 23.cxb5 axb5] **21.Nxd6 exd4 22.c5 Rd7 23.Rfe1 Be5 24.e3 Bxd6 25.cxd6 Rxd6 26.Rxd4 Rxd4?!±** Bryan gets a " winning " advantage [26...Rbd8 27.Red1 Rxd4 28.exd4 Bd5] **27.exd4 Rd8** 1.52 [27...Rc8?! 28.Bb7 Rc7 29.Bxa6 Ra7 30.Bxb5 Rxa2+- 1.99] **28.d5 Bf5 29.f4?!±** [29.Rc1?! b4 30.h3 Kf8 31.Rc4 a5 32.Rc5 Ra8; 29.b4 Kf8 30.h3 Bd3 31.Rd1 Bc4 32.d6 Bxa2+-] **29...Kf8 30.Kf2 Rc8 31.Be4 Bg4** [31...Bxe4

32.Rxe4 Rd8 33.Rd4 Ke7 34.Ke3 Rc8±] **32.Re3 Rc1 33.b4 Rc4 34.a3 Rc1 35.Rd3?!±** [35.h4 f5 36.Bg2 Kf7±] **35...Rc2+ 36.Ke3 Ke7 37.d6+ Kd7 38.a4??-+ a blunder – Oscar gets a " winning " advantage** [38.Bb7 Re2+ 39.Kd4 Kxd6 40.h4 Rc2 41.Rc3 Rxc3 42.Kxc3 Kc7 43.Bd5 (43.Bxa6?? Kb6 44.Bxb5 Kxb5-+) 43...f6±]

Position after 38.a4



38...bxa4?=- Oscar gets material equality again , but misses his win ! [38...Re2+ 39.Kd4 Rxe4+! 40.Kxe4 Bf5+ 41.Kd4 Bxd3 42.Kxd3 bxa4 43.Kc3 Kxd6 44.Kb2 Kc6 45.Ka3 Kb5-+] **39.Bb7??** Oscar gets a " clear " advantage [39.Ra3 Re2+ 40.Kd4 Rxh2 41.Rxa4 Rd2+ 42.Ke3 Rxd6=] **39...Re2+?=-** [39...Rb2 40.Rc3 Be6±] **40.Kd4 Kxd6 41.Bxa6 Rxh2** Oscar goes up a P **42.Kc4+?-+ Oscar gets back a " winning " advantage** [42.Bb5 Ra2 43.Bc4 Ra1 44.Kc3+ Ke7 45.Re3+ Kf6=] **42...Kc7 43.Rc3 Kb6 44.b5 Rd2 45.Kb4 Rd4+ 46.Ka3 Bd7 47.Re3 Bxb5?=-+ – 2.03 Oscar goes up 2 P's** [47...h5 48.Kb2 Bxb5 49.Bxb5 Kxb5-+ – 3.20 Oscar would be up 2 P's] **48.Bxb5 Kxb5 49.Re5+ Kc6 50.Re7 Rd3+ [50...f5 51.Re6+ Rd6 52.Re3 Kb5 53.Kb2 Kc4 54.Kc2 Rd4-+] 51.Kxa4 Rxg3 52.Rxf7** Oscar is up only 1 P **52...Kd6 [52...h5 53.f5 g5 54.f6 h4 55.Re7 h3 56.Re6+ Kc7 57.f7 Rf3 58.Rg6 Rxf7 59.Rxg5 Rh7 60.Rg1 h2 61.Rh1 Kc6-+] 53.Kb4 [53.Rh7 h5 54.f5 gxf5 55.Rxh5 Ke5-+] 53...Ke6 54.Rf8 h5 55.Kc5**



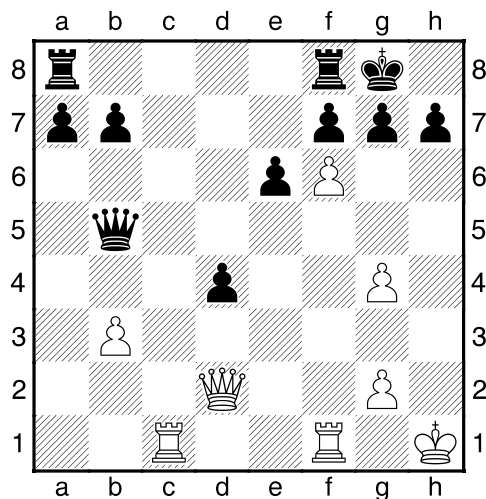
h4?= Oscar loses his win [55...Rf3 56.Kd4 Ke7 57.Ra8 Rxf4+ 58.Ke5 Rf5+ 59.Ke4 Kf6-+] **56.Kd4 Ke7** [56...h3 57.Ke4 Rb3 58.Rh8 Kf6 59.Rh7 Ra3 60.Rh4 Kg7 61.Rg4 Kf6 62.Rh4=; 56...Rb3 57.Ke4 h3 58.Rh8 Kf6 59.Rh7 Ra3 60.Rh8 Kg7 61.Rh4 Rb3 62.Ke5 Re3+ 63.Kd4 Rf3 64.Ke5 Rc3 65.Ke4 Kf6 66.Rh7 Rb3=; 56...Rf3 57.Ke4 Ra3 58.Rd8 Kf6 59.Re8 h3 60.Rh8 Kg7 61.Rh4 Kf6=] **57.Rh8 Kf6 58.Ke4 Ra3?!=** drops the hP [58...h3 59.Rh7 Ra3 60.Rb7 Rc3 61.Rh7 Rb3 62.Rh6 Ra3 63.Rh8 Kg7 64.Rh4 Rb3=] **59.Rxh4=** ½-½

Also in Rd. 2, C class player Lui Morra continued on his rampage, defeating A player Mickey Stein, using a surprising rook sac ! Here is their game (Annotations by Bob Armstrong, using Fritz):

Morra, L (1542) – Stein, M (1955) [B12]

SCC Fall Swiss (1700 & Over) Toronto, Cana (2), 08.11.2007

1.e4 c6± 2.d4 d5 3.e5 c5 [3...Bf5 4.Nf3 e6±] **4.c3?!=** [4.Nf3 Nc6 5.dxc5 e6 6.Be3 Nh6±] **4...Nc6** [4...cxd4 5.Qxd4 Nc6 6.Bb5 Qd7=] **5.Nf3** [5.Bd3 cxd4 6.cxd4 Nxd4 (6...Bd7?! 7.Nc3 Nxd4 8.Bb1 Ne6±) 7.Nf3 Nc6 8.Qb3 f6=] **5...Bg4?!±** [5...cxd4 6.cxd4 Bg4 7.Nc3 e6=] **6.Be2?!=** [6.dxc5 e6 7.Bb5 Qc7±] **6...e6 7.Be3?!±** [7.Nbd2 cxd4 8.cxd4 Rc8 9.0-0 Nge7=] **7...Nge7 8.h3?!±** Mickey gets a " clear " advantage [8.Nbd2 Nf5 9.0-0 Be7 10.h3 Nxe3 11.fxe3 Bf5±; 8.0-0 Nf5 9.Nbd2 Be7±] **8...Bxf3 9.Bxf3 Nf5** [9...Qb6 10.Qd2 Nf5 11.dxc5 Bxc5 12.Bxc5 Qxc5±] **10.0-0 cxd4?±** Lui gets the advantage [10...Qb6 11.Nd2 cxd4 12.Bf4 Ne3 13.fxe3 dxe3 14.Nc4 dxc4 15.Qe2 Bc5 16.Rfe1 a5±] **11.cxd4 Qb6 12.Qa4?+** Mickey gets a " winning " advantage [12.Nc3 Qxb2 13.Nxd5 exd5 14.Bxd5 Rd8± Mickey would be up N vs P] **12...Nfxd4** – 1.95 Mickey goes up a P [12...Qxb2 13.Rc1 Qb4 14.Qxb4 Bxb4+ – 1.95 Mickey would be up a P] **13.Bg4 Qxb2** Mickey goes up 2 P's **14.Nd2 Qc2?!±** [14...Qa3 15.Qd1 Qd3 16.Rb1 b5 17.Nb3 Qxd1 18.Rfxd1 Nxb3 19.axb3 Nxe5+ Mickey would be up 3 P's] **15.Nb3 Nxb3 16.axb3 Qe4 17.Qb5?!+** [17.Qxe4 dxe4 18.f4 a5 19.Rfd1 Bb4±] **17...Qb4 18.Qe2 Be7 19.Bd2 Qb6 20.Kh1 0-0 21.Rac1 d4 22.f4 Bb4 23.f5?+ – 3.19** [23.Bxb4 Nxb4 24.f5 Nd5 25.Qd3 exf5 26.Bxf5 h6 27.Bh7+ Kh8 28.Be4 Ne3 29.Rf4 Rad8+ – 2.38] **23...Bxd2 24.Qxd2 Nxe5** Mickey goes up 3 P's **25.f6 Nxb4 26.hxg4 Qb5??+ – 4.03** a fatal blunder in a won game [26...gxf6 27.Rxf6 Rad8 28.Qg5+ Kh8 29.Rcf1 Rd5 30.Qxd5 exd5 31.Rxb6 axb6+]]



27.Rf5! Lui sacs his R. It is either give up the Q or be mated, for Mickey. **27...exf5?+-** Mickey resigned – mate is coming [27...Qxf5 28.gxf5 gxf6 29.Qxd4 Rfc8+-] The mate is **28.Qg5 g6 29.Qh6 Qf1+ 30.Rxf1 fxc4 31.Qg7# 1-0**

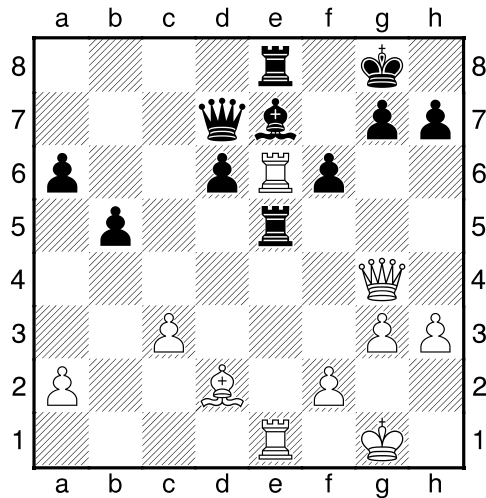
Also in Rd. 2, in the lower section, new juniors Kevin Wu and Jerry Wang, got into a battle royal. Jerry got the early advantage, and Kevin dropped a centre pawn. But Kevin came roaring back, and got the advantage, though down a pawn, and often had a winning advantage. But at move 32, he captured with the wrong rook, and the advantage shifted back to Jerry, up a pawn. Though Kevin tried valiantly to hold the ending, Jerry triumphed in the end. Here is their game (Annotations by Bob Armstrong, using Fritz):

Wu, K (1517) – Wang, J (1733) [C90]

SCC Fall Swiss (U 1700) Toronto, Cana (2), 08.11.2007

1.e4 e5 2.Nf3 Nc6 [2...Nf6=] **3.Bb5 a6 4.Ba4 Nf6 5.0-0 Be7 6.Re1** [6.Nc3 b5 7.Bb3 0-0 8.a3 d6=] **6...b5 7.Bb3 d6 8.h3** [8.c3 0-0 9.d4 Bb7 10.Bc2 exd4 11.cxd4 Nb4=] **8...Na5 9.c3 Nxb3 10.Qxb3?!?** Jerry gets the advantage [10.axb3 c6 11.d4 Qc7=] **10...Bb7 11.Qc2 c5** [11...0-0 12.d3 Nd7 13.Nbd2 f5=] **12.d4** [12.d3 0-0 13.Nbd2 Nd7=] **12...cxd4 13.cxd4 Rc8?!=** [13...0-0 14.Qd3 Rc8 15.Nbd2 d5 16.dxe5 Nxe4=] **14.Qd1?!** Jerry gets a " clear " advantage [14.Nc3 0-0 15.Qb3 d5 16.exd5 Nxd5 17.Nxe5 Nxc3 18.bxc3 Bd5 19.Qb2 Qa5 20.Ng6 fxc6 21.Rxe7 Qxc3 22.Qxc3 Rxc3=] **14...exd4?!?** best to take the eP [14...Nxe4 15.dxe5 dxe5 16.Qxd8+ Rxd8 17.Nxe5 Bc5=] **15.Nxd4?!?** this leaves the eP unprotected [15.Bg5 0-0 (15...Nxe4 16.Bxe7 Qxe7 17.Nxd4 Qh4 18.f3 Qf2+ 19.Kh1 Rc4 20.Nb3 0-0 21.fxe4 Bxe4 22.Qd2 Bxc2+ 23.Kh2 Rc2 24.Qxf2 Rxf2 25.N1d2 Bd5+ 26.Kg1 Rg2+ 27.Kf1 f5= BI would have3 P's vs N) 16.Nxd4 d5 17.Bxf6 Bxf6 18.e5 Bg5=] **15...Bxe4** Jerry goes up a P **16.Bg5 Bg6?+-** an error – Kevin gets a " winning " advantage [16...d5 17.Nc3 0-0=] **17.Qe2?!** Kevin fails to mess up Jerry's K-side and loses his advantage [17.Bxf6 gxf6 18.Nc3 d5 19.Qf3 0-0 20.Nxd5 Bd6 21.Nf5 (21.Nxf6+?! Kg7 22.Nh5+ Kh8±) 21...Bxf5 22.Qxf5 Be5+-] **17...Nd5?+-** Kevin gets back his " winning " advantage [17...Kf8 18.Nd2 h6 19.Be3 Kg8=] **18.Nc3 Nxc3** 2.07 [18...Kf8? 19.Qf3 Kg8 20.Rxe7! Nxe7 21.Nd5 f6 22.Bxf6 gxf6 23.Ne6 Nxd5 (23...Qe8 24.Nxf6+--) 24.Nxd8 Rxd8 25.Qxd5+ Bf7 26.Qb7 Kg7+- 3.55] **19.bxc3?±** Kevin is losing his advantage again [19.Qxe7+ Qxe7 20.Rxe7+ Kf8 21.bxc3 h6 22.Bh4 Rxc3 23.Ra7 Kg8 24.Rxa6 b4+-] **19...f6 20.Ne6?!=** Kevin has lost his advantage, and Jerry is still up a P [20.Bf4 Qd7 21.h4 h5 22.a4 bxa4 23.Qxa6 0-0=] **20...Qd7 21.Bd2** [21.Qf3! fxc5 (21...d5 22.Nxc7+ Kf7 23.Nh5 Be4 24.Nxf6 Bxf3 25.Nxd7 Bxc5 26.Ne5+ Kf6 27.Nxf3 Rxc3 28.Nxc5 Kxc5 29.Re5+ Kf6 30.Rxd5 Re8=) 22.Nxc7+ Kd8 23.Ne6+ Ke8 24.Ng7+=] **21...Rg8?!±** [21...Kf7 22.Nxc7 d5 23.Ne6 Be4 24.Nf4 Rhg8=] **22.Nf4?!=** [22.a4 Rc4 23.Qf3 bxa4 24.Nf4 Kf8 25.Qa8+ Qc8 26.Qxc8+ Rxc8 27.Rxa4 Ra8± Jerry would still be up a P] **22...Bf7** [22...Kf7 23.a4 Rge8=] **23.Qf3 Qc6?!±** [23...Kf8 24.a4 bxa4 25.Nd5 Bd8 26.Rad1 Rh8=] **24.Qg4** [24.Qe3 Qd7 25.a4 g5 26.Ne2 bxa4±] **24...Qd7 25.Ne6?!** [25.Qf3 Qc6 26.Qe3 Rc7 27.a4 bxa4 28.Ne6 Bxe6 29.Qxe6 Kf8±] **25...Bxe6?±** [25...g6 26.Re3 Bxe6 27.Rxe6 f5 28.Qe2 Kf7 29.Re1 Rge8=] **26.Rxe6 Rc4?±** Kevin gets back a " clear " advantage [26...Rc5] **27.Qe2?!** but he loses it again [27.Qh5+ Kf8 28.Rae1 Rc5 29.Qg4 Re5 30.R1xe5 fxe5 31.Qf3+ Ke8 32.Qd5 Rf8±] **27...Kf7 28.Re1 Re8 29.Qh5+ Kg8 30.g3?!?** [30.Qd5 Kf8 31.Qh5 Kg8= (31...Rc5? 32.Qxh7 Re5 33.Bh6 gxh6 34.R1xe5 dxe5 35.Rxf6+ Bxf6 36.Qxd7+-)] **30...Rc5?!** [30...d5 31.Rxa6 g6 32.Qf3 Re4 33.Qd3 Rxe1+ 34.Bxe1 Qb7 35.Re6 Kf7 36.Re2 Bc5=] **31.Qg4?!?** [31.Rxd6! Qxd6 32.Qxe8+ Bf8=] **31...Re5?+-** Kevin gets back a " winning " advantage [31...Rd5 32.Bf4 g6 33.a4 Kg7 34.axb5 h5 35.Qf3 Re5 36.Rxe7+ R5xe7 37.Rxe7+ Rxe7 38.bxa6 Qc8=]

Position after 31...Re5



32.R1xe5??? after playing quite well for most of the game, after losing the centre pawn, and often having a winning advantage, Kevin stumbles – Jerry gets a " clear " advantage, and now will carry it through to the end (though he is still only up a P). [32.R6xe5 Qxg4 33.Rxe7! Qc4 34.Rxe8+ Kf7 35.Bf4 g5 36.Bxd6 h5+-] **32...dxe5 33.Bh6?!-+** Jerry gets a " winning " advantage [33.Be3 a5 34.Kh2 Bf8 35.Rxe8 Qxe8 36.Qe4 h6±] **33...Bf8 34.Rxe8 Qxe8 35.Be3 Qf7?!±** [35...Qc6 36.Kh2 Be7 37.h4 g6-+] **36.Qe2?!-+** [36.Qc8 Qxa2 37.Bc5 Qf7±] **36...Qc4 37.Qxc4+ bxc4 38.Kg2 Kf7 39.g4 g6 40.Bc1 Ke6 41.Kf3 Kd5 42.Ke2 Bg7 43.Bd2 h5 44.gxh5 gxh5 45.Be3 f5 46.Kd2 f4 47.Bb6 f3 48.Ke3 e4 49.Kd2 Bh6+ 50.Kd1 Ke5 51.Bd4+ Kf5 52.Bc5 Bg7 53.Kc2?-+ – 5.54** [53.Kd2 Be5 54.Bb6 Bf4+ 55.Kd1 Ke6 56.Ke1 Kd5 57.Kd1 Kd6 58.Ba7 Be5 59.Kd2 Ke6 60.Be3 Kd5-+ – 2.52, and Bl is having difficulty making any progress.] **53...Bf6?-+ – 2.52** [53...Kg5 54.Kd2 Kh4 55.Ke3 Kxh3 56.Kxe4 Kg2-+ – 8.89] **54.Bd6?-+ – 13.54** [54.Kd2 Kg5 55.Be3+ Kh4 56.Ke1 Bxc3+ 57.Kf1 Bf6-+ – 8.69] **54...Bg5?-+ – 2.67** [54...e3! 55.Bg3 e2 56.Kd2 h4 57.Bc7 Bxc3+ 58.Kxc3 e1Q+-+] **55.Bc5 Bh4 56.Bb6 Bf6 57.Kd2 Bg5+ 58.Ke1 Bf6** [58...Bf4? 59.a4 Ke6 60.Kd1 Kf6 61.Bc5 Kf5 62.Ke1 Ke6 63.Kd1 Be5 64.Kd2 Kf5 65.Bb6 Bf6-+ and again Jerry would seem to be making no headway, despite the Fritz valuation.] **59.Kd2 Kg5 60.Ba5 – 6.11** [60.Ke3 Bxc3 61.Kxe4 Kh4 62.Kxf3 Kxh3 63.Ke4 Bf6 64.Be3 Kg2 65.f4 h4 66.f5 c3 67.Kd3 Be5 68.Ke4 Bd6 69.Kd5 Be7 70.Bd4 c2 71.f6 c1Q 72.fxe7 Qe1 73.Bc5 Qd2+ 74.Ke6 Qxa2+ 75.Kf6 Qg8-+ -11.01] **60...Kh4 61.Ke3 Kxh3 62.Kxe4 Kg2 63.Kf5-+ – 11.27**Kevin is up an outside passed hP **0-1**

2008 Canadian Youth Chess Championship Qualifier

**Your path to the
World Chess Championship**

Sponsored by the Chess Federation of Canada

All players will receive a chess rating : Membership is NOT required.

Regional Qualifier

Saturday, November 24, 2007

STEPHEN LEACOCK COLLEGIATE INSTITUTE

2450 Birchmount Rd. * check-in

AGINCOU R T 8:30 -9:00 am U18, U16 ;

(2 blocks north of Sheppard) 9 -- 9:30 younger groups ;

*** YOU MUST play starts 15 min later ;**

REGISTER IN ADVANCE! games completed by 5:00pm

5 separate 6-round tournaments: [Age on 2008 01 01]

Under 10, Under 12, Under 14, Under 16, and Under 18

Everybody plays **six** games and receives a participation prize

Champions and all other qualifiers win medals

One of every 5 players qualifies for the Ontario Provincial Championships

Top two in Ontario go on to the National Championship

National champions attend the World Youth Championships

ENTRY FEE: \$ 15 MAP and REGISTRATION FORM attached

FOR MORE INFORMATION, CONTACT: Chris Field (416) 926-0033

chris.field@rogers.com

BRING: A packed lunch. Each group will have a 30-minute break.

NEW THIS YEAR: Sets, boards, and clocks are provided by the Ontario Chess Asso.!

Note: some chess sets, clocks, and books will be on sale at site.

Map to **Stephen Leacock CI N**

2450 Birchmount Rd .

C C **Finch Ave E**

C C

C C **Huntingwood Ave**

C C

Leacock

Arena C C

Driveway C C

North

Parking front entrance Stephen Leacock CI

Lot South 2450 Birchmount Rd

Parking Lot [Cafeteria straight ahead]

Bay Mills Blvd C C

C C

C C C C **Sheppard Ave E.**

C C C C

By TTC:

Birchmount bus # 17
from Warden Station
or south from Steeles Ave E
stops at the school

Parking:

Enter driveway at the stop light.
Park in the north parking lot behind the school.
[There is an entrance to the CAFETERIA at the back of the school.]

CANADIAN YOUTH CHESS CHAMPIONSHIP

Saturday, November 24, 2007

STEPHEN LEACOCK COLLEGIATE

PROVINCIAL QUALIFIER REGISTRATION FORM

ADVANCE REGISTRATION: Please mail with \$15 cheque payable to
Stephen Leacock Collegiate

N.B. Mail to: Chris Field,
postmarked Stephen Leacock Cl,
on or before 2450 Birchmount Rd,
Fri Nov 16. Agincourt, Ont M1T 2M5
N.B. Fax / e-mail OR: fax to 416-396-8042
registrations or e-mail info to chris.field@rogers.com

CANNOT be accepted
after Wed Nov 21. [pay cash at site]
*** YOU MUST REGISTER IN ADVANCE!**

SECTION: age on 2008 January 1

Under 10 **9** Under 12 **9** Under 14 **9** Under 16 **9** Under 18 **9**

NAME

(Last name) (First name)

ADDRESS E-mail

CITY POSTAL CODE

PHONE NUMBER () **BIRTHDAY**

year - month - day

SCHOOL GRADE

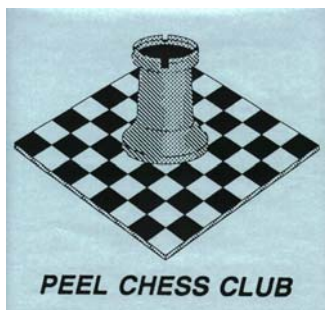
CHESS RATING: Leave blank if unrated.

CFC

ID number: Leave blank if not a member.

CFC

9 I'd like to join the Chess Federation of Canada: with magazine \$27 ; no mag
\$14



William F. DARCH MEMORIAL IV

NOV. 30, DEC. 1,2. 2007
GUARANTEED \$100 FIRST PRIZE
6 ROUND SWISS

MAXIMUM NUMBER OF PLAYERS 16

e-mail: peelchessclub@canada.com

This tournament is by invitation only – please call John Brown concerning requests to enter

Location: John Brown's Apartment Entry Code: 504

1005- 11 Knightsbridge Road, Brampton, Ontario. L6T 3X4 (905-458- 6791)

BYES AVAILABLE: ½ pt. Byes in Rounds 1-4 ONLY. 0 pt. Byes in any other Round.
Forced T.D. Byes 1pt.

Rounds: Option 1: Rd. #1 Friday Nov. 30, 2007. 7:00 p.m. Rds. 2-3 Sat. Rds. 4-6 Sun.
Option 2: Rds. #1-3 Sat. Dec. 1, 2007. 9:00 a.m., 12:30 p.m., 6:00 p.m.
Rds. #4-6 Sun. Dec. 2, 2007. 10:00 a.m., 2:30 p.m., 7:00 p.m.

Time Controls: Option #1 2Hrs. S/D non-digital clocks, 90mins S/D with 30 sec./move Digital
Option #2 (Rd. #1 90mins S/D both clock types) Rds. 2-6 Same as Option

Entry Fees: \$40.00 NO LATE ENTRIES. Mail entry no later than Nov. 20,2007.
Last date to confirm entry: Wed. Nov. 28, 2007 by phone or e-mail.
Note: You will be paired & lose rating points if you do not show up for a round.

Prizes: After rating fees are deducted: \$600, based on 16 players.

First: \$100 Guaranteed !!! + \$45.00 more from entries. Possible win \$145.
Second: \$90, Third: \$80, Fourth: \$70, Fifth: \$60, Sixth: \$50 ,
Seventh: \$40, Eighth: \$30, 9th and 10th \$17.50 , 11th – 16th get Book Prizes.

Note: If less than 16 players. Prizes after \$100 First would be by a percentage depending on number of entries, less rating fees.

Out Of Town Players: Please contact John Brown for Hotel/ Motel information.

Directions to John's Apartment are on page 2

NORTH: is at the top of this page

Address: 11 Knightsbridge Rd. Apt 1005 Bramalea/Brampton **BUZZER CODE 504**

J. Brown

Phone: 905- 458- 6791

Get to Brampton any way you want. Bramalea is where I live & starts at Dixie Rd.

_____ Hwy #7 or Queen Street _____

Bramalea City Centre _____ Kensington Rd. _____



_____ Knightsbridge Rd. _____



. D	. C	. K	. B
. I	. E	. I	. R
. X	. N	. N	. A
. I	. T	. G	. M
. E	. R	. S	. A
. R. D	. A	. Cross	. L
	. L	. Road	. E
	. PARK		. A
	. Drive		. Rd

_____ CLARK BLVD. _____

Instructions to read this map.

1. Print out this page.
2. Connect dots (North-South) Dixie Rd. , Central Park Drive and Bramalea Rd. to Queen Street & Clark Blvd.
3. Connect dots (North-South) Kings Cross Rd. to Kensington & Clark Blvd.
4. Where Apartment Buildings are is where I live. I live at 11 KNIGHTSBRIDGE RD.it is off the road near a small street called KINGS CROSS RD. Whether you come from Central Park Drive or Bramalea Rd. on Knightsbridge intersection at stop sign my building is south west

of that intersection (Smallest building off road beside 5 Kings Cross. See symbols at bottom
#3 Knightsbridge is on left & is very tall
11 Knightsbridge is ME with bar in middle and #5 Kingscross is beside ME on King's
Cross Rd.

If you stay overnight or only until 10 p.m. , look for visitors parking at any one of these
buildings.

5. Park on King's Cross Road on both sides of the road if you do not find visitors parking.



W.F.D. ENTRY FORM

Name: _____

Address: _____

Phone: _____

C.F.C. No. _____ **& Expiry Date:** _____

BYES REQUESTED: Circle Rounds Bye Needed 1 2 3 4

Playing Options: Circle for Rd. 1 Option 1(Fri.) Option 2 (Sat.)

Entry Fee: **\$40.00**

C.F.C. Fee: _____

(See rates in Chess Canada Magazine)

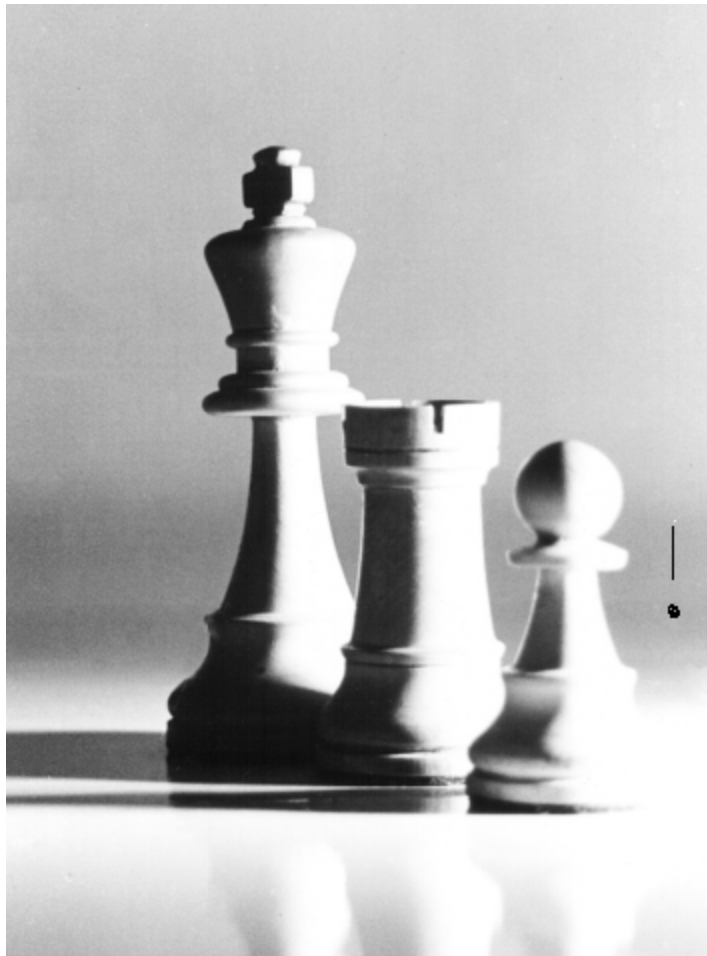
Note: You can pay a one time \$10.00 participant fee if you do not want to join C.F.C.

Total Fees Paid: _____

MAKE CHEQUES PAYABLE TO JOHN R. BROWN

Your e-mail address _____

An Impressive Trio !



A - Members/ non-members may contact Bob Armstrong, ed. , directly, at bobarm@sympatico.ca or through SCC e-mail, to :

1. Be added to the free e-mail list; 2. Submit content (fact, opinion, criticism, recommendations!).
- B – An item in any language may be submitted for publication, if accompanied by an English translation.
C – The opinions expressed here are those of the editor, and not necessarily those of the Scarborough CC.
D - To review this newsletter after it has been deleted, or any of the archived newsletters back one year, visit our own SCTCN&V official website at : <http://scarboroughchess.webhop.net>.
E – Please notify us if you wish to be removed from the free subscription list

