

**Scarborough Community of Toronto**  
**Chess News & Views**

Newsletter of / Le Journal de  
**Scarborough Chess Club**

**“ FRIENDLY Chess Since 1960 ”**

*ITEMS OF INTEREST TO BOTH MEMBERS & NON-MEMBERS*

**Issue # 10-16 – April 15, 2009**

**GTCL CFC Member Election of CFC Governors – Can GTCL Stop Someone from Voting at the AGM?**

The Greater Toronto Chess League ( GTCL ) is one of four regions that the OCA has set up to administer chess in the Province of Ontario. Each year, each of these regions nominates ( under the current OCA Bylaws ) their respective share of Ontario CFC Governors at their AGM. Your GTCL AGM is coming up on **Saturday, May 2** ( see notice under this article ), and “ we “ will be “ electing ( sort of ) “ our GTCL CFC Governors.

One of the current GTCL CFC Governors, Egis Zeromskis ( who is also on the GTCL Executive ) wrote me recently about a series of exchanges I had been having with the GTCL Executive on GTCL CFC members’ right to vote for CFC Governors at the GTCL AGM. He asked ( with copies to all GTCL CFC Governors, including Michael Barron, GTCL President ) what problem I had with the GTCL Executive on this point. I responded as follows:

**“ February 5, 2009**

**Hi Egis:**

- 1. As I understand it, GTCL has always in fact " allowed " CFC members at the GTCL AGM to " nominate " their CFC Governors, according to the OCA Bylaws. I have an issue with the OCA with respect to the fact that**

---

Continued on next page

**SCTCN&V Website : <http://scarboroughchess.webhop.net>**  
**SCC e – mail : [info@ScarboroughChessClub.ca](mailto:info@ScarboroughChessClub.ca) SCC Website : <http://www.ScarboroughChessClub.ca>**  
Jack Goodlad Community Ctre, 929 Kennedy Road  
( ½ way between Eglinton Ave. and Lawrence Ave. )

**the OCA Bylaws allow the OCA Governors to " elect " the CFC Governors, while the CFC members can only " nominate ". The CFC Handbook says that the CFC members must " elect " the CFC Governors. As you know, I have filed proposed amendments at the OCA, which will be dealt with at the OCA AGM by the OCA Governors. As well, Chris Mallon , OCA President, has advised me that he is directing the OCA Executive to come to a recommendation on this for the OCA AGM, and it will be made public when arrived at.**

**2. The issue at the GTCL AGM is the term " allowed ". CFC members have the absolute right to elect their CFC Governors, so long as they are in good standing and at the AGM, according to the CFC Handbook.**

**The problem has arisen because the current GTCL Secretary expressed his opinion that the right of the CFC member was not absolute. He stated that the GTCL Executive could prohibit a CFC member from voting, who was otherwise qualified to vote. He termed this a right to " screen " CFC member voters at the AGM. He went on further to give the example of what he would oppose: a " faction " of GTCL/CFC members running a slate of candidates for GTCL CFC Governors. Here he said the GTCL could prohibit some CFC members from voting. He later confirmed that he took this position personally, and that he was not speaking for the rest of the Executive. What he did not say, was whether the rest of the Executive in fact agreed to this position.**

**So, although in fact in the past, the GTCL Executive has not used this " policy ", it MAY exist, and be available to be used in future GTCL AGM's. This would be in breach of the CFC Handbook and the OCA Bylaws.**

**I do not know if the Secretary's position is that of the whole Executive, and is GTCL Executive policy. So I wrote Michael Barron, GTCL President, to have him clarify what the actual GTCL Executive policy is on this issue:**

---

Wed. Feb. 4, 2009

Hi Michael:

Thank you for expressing your position. I will not ask for endless discussion by the GTCL Executive.

In a recent letter to David Lavin [ Ed. – CFC President ] I wrote:

" The GTCL Executive MAY be in breach of the CFC Handbook – some members hold that the CFC members in the GTA do not have an absolute right to “ elect “ their CFC Governors. Some hold that the GTCL Executive, at the AGM, could prohibit a CFC member from voting for their CFC Governors, if the Executive thought there was a good reason. I have asked GTCL President, Michael Barron, for confirmation whether this “ screening of CFC member voters “ is a majority position of the GTCL Executive, or a minority view. I will advise you as soon as I find out. "

Erik [ Ed. – GTCL Secretary ] has advised below that he was not speaking on behalf of the Executive when he was expressing his personal opinion set out above. But he did not say how many of the Executive agreed with his position.

So I need an answer to the question of the majority view of the GTCL Executive, on whether the GTCL can interfere in the vote of a CFC member in good standing at the GTCL AGM for the CFC Governors. I need this so I can advise David, as I undertook to do.

If you need time to canvas the other GTCL Executive on this issue, please take it. Or perhaps you already know the answer? It is very important what position is the “ majority “ position of the GTCL Executive on this issue.

So, will you confirm that the “ GTCL screening of CFC member voters for CFC Governors “ is NOT a majority GTCL Executive policy, and that any CFC member in good standing at the AGM has the right to vote to “ nominate “ ( the current OCA policy ) GTCL CFC Governors? This is not just a theoretical point, nor am I asking that it be an endless discussion. I would hope your Executive could deal with it expeditiously, and give me an answer, and then get on with their other priorities.

Thank you.

Bob

---

**I am awaiting a reply from Michael. I hope that Erik's position is not " a policy " of the GTCL Executive. If it is, I believe it is illegitimate, and breaches the GTCL CFC member rights, the CFC Handbook and the OCA Bylaws.**

**I hope this clarifies the situation.**

**Thank you for taking an interest as one of the GTCL CFC Governors, and a GTCL Executive member.**

**Bob “**

Well, I never did ever receive a reply from Michael Barron, GTCL President. This is not just a theoretical issue, and it is fundamental to the rights of CFC members in the GTCL. It is critical that the GTCL President repudiate the views of his Secretary, and confirm that there is no GTCL Executive Policy conforming to the views of the Secretary. If there is a GTCL Executive Policy of the right to “ screen CFC member voters for CFC governors at the GTCL AGM “, it is illegal, and must be rescinded, and must be rejected publicly by both the CFC and the OCA.

I am uncertain whether Michael appreciates the seriousness of this question, since I have asked him on a number of occasions now for clarification and he has failed to respond. On one occasion, he seemed to be saying the Executive was too busy with other

GTCL chess matters to discuss this issue ( the Secretary had also said that he felt his view was not important enough to be discussed any more ). On another occasion Michael expressed frustration with “ constitutional “ issues, and advised he only wanted to spend time on concrete chess projects. I am sympathetic – who likes constitutional issues?

But I am concerned about this. The right of CFC members in the GTCL to “ nominate “ ( current OCA rules ) their GTCL CFC Governors is definitely worth discussing. It makes me concerned that indeed the GTCL Executive has such a policy, and is unwilling to publicly admit it.

Does there exist an “ Executive Policy on AGM Screening “ ?

Here are the Executive of the GTCL:

| <b>Title</b>                       | <b>Name</b>                 | <b>Email</b>   | <b>Telephone</b> |
|------------------------------------|-----------------------------|--|------------------|
| <b>President</b>                   | Michael Barron              | <a href="mailto:barron045@yahoo.com">barron045@yahoo.com</a>   |                  |
| <b>Vice-President</b>              | Ilia Bluvshstein            | <a href="mailto:iblvsht@uniongas.com">iblvsht@uniongas.com</a>   |                  |
| <b>Secretary</b>                   | Erik Malmsten               | <a href="mailto:jerik@idirect.com">jerik@idirect.com</a> ;   |                  |
| <b>Treasurer</b>                   | Nicholas J. Varmazis, P Eng | <a href="mailto:varmazisn@hotmail.com">varmazisn@hotmail.com</a>   |                  |
| <b>Director of Communications</b>  | William Yuan                | <a href="mailto:williamyuan@torontochess.org">williamyuan@torontochess.org</a><br><a href="mailto:GTCL@torontochess.org">GTCL@torontochess.org</a><br><a href="mailto:webmaster@torontochess.org">webmaster@torontochess.org</a> |                  |
| <b>League and Club Coordinator</b> | Egidijus Zeromskis          | <a href="mailto:kris-egis@kris-egis.com">kris-egis@kris-egis.com</a>   |                  |

All GTCL CFC members should be concerned about this issue – the GTCL MAY be seeking to “ control “ CFC member voting for GTCL CFC Governors. Write to the Executive and request that they publicly declare that:

1. there is no such Executive Policy, and
2. CFC members, otherwise entitled to vote, will be allowed to vote for their CFC governors without interference from the GTCL at the upcoming GTCL AGM this Spring on Saturday, May 2.

It is your vote, and your AGM – protect it ! Make your vote count – come out and use your vote !!

### **GTCL to Hold Its Annual General Meeting on Sat. May 2 !**

The location has now been confirmed (the same site as they've used the last few years ):

Greek Orthodox Metropolis of Toronto,  
86 Overlea Blvd., between Don Mills and Thorncliffe.  
( turn North at William Morgan Drive, turn East and through the gates )

The time will be from 11:00AM – 2:00 PM.

### **Some GTCL Governor Candidate Statements**

Last Issue we published that, given the importance of the role of CFC Governor, we would like to help Candidates present themselves to the GTA CFC members. We asked that they send us a short, concise, approximately 200 - 300 word description of themselves ( chess-wise ), and any statement they would like to make. We said we would publish it in the next issue of the newsletter. If they still wish to do that, they still can and we will publish it next Issue ( May 1 )! If you know someone who is thinking of running ( incumbent or newbie ) who you think may not get this newsletter ( there are such Neanderthals?? ), please let them know. Thanks.

Here are the “ Candidate Statements “ we received so far ( alphabetically ):

#### **Bob Armstrong :**

I have been playing serious chess now for about 45 years ( whew ! ). I have been an active player : re the most active Canadian tournament player, I was 4<sup>th</sup> in 2006, 1<sup>st</sup> in 2007 and 5<sup>th</sup> in 2008. I was the 1964-5 University of Western Ontario Champion ( not exactly a strong club at the time ), and played in what is now called the Canadian Post-Secondary Championship for U.W.O.. I have played in the last 3 Canadian Opens and will be going to Edmonton in July.

I was on the executive of the SCC for a year and half a while ago. I have been the editor of the SCC newsletter for 10 years. I have been the SCC Database Administrator for about 2 years. I do free game analysis for SCC members who are interested. I organized a CFC-member grassroots group called the Grassroots' Campaign, that proposed an agenda for saving the CFC from the financial mess it had been in for years, and nearly all of these proposals were subsequently implemented by the governors. I have organized a second CFC member group that is now dealing with the issue of governor reduction ( 2 motions have been filed ). I regularly follow the Canadian chess discussion sites, and regularly post on various topics. I have taken the initiative to recently file , with the assistance of moving/seconding governors, motions at both the CFC and OCA levels, to bring OCA structures and procedures into line with the CFC Handbook. I have been active lobbying the GTCL on CFC member rights.

I believe in member involvement in the CFC and hope that my involvement in CFC affairs has shown that the current structure of the CFC is amenable to organized ( and somewhat determined ) member action. I hope to help members become more involved, and to encourage the governors to take a more pro-active role, with the CFC Executive, in initiating CFC action. I will help represent Ontario and GTCL interests at the CFC.

### **The President's Perspective**

[ this is a new feature we have started; a couple of times a year, the SCC President will give us his take on the club, or Canadian chess or chess in general – thanks to Maurice for this Issue’s contribution and starting it off. ]

As President of the Scarborough Chess Club and having to be aware of and in control of all the different functions of the Club, I have a unique view of our organization. At the moment, what I see is quite encouraging. The Club is having a very successful year with new players continuously becoming members. What makes our Club so successful? I think there are several answers that combined make our Club so unique. In my opinion we have an excellent Executive with individual talents and many years experience with the Club. Then we have a flexible payment system for members, a grand prix, trophies on occasion, tournaments with classes, a database and of course our very own Newsletter. The volunteers who help set things up and put things away. All that and of course our reputation as being the friendliest chess club around. However all that success brings its own challenges. Where first a few years ago we thought our location at Goodlad Community Centre would be too big, now on some nights we have to be quite resourceful in finding enough room for everyone to play. Finding a perfect new location is extremely difficult. Most members live west of our current location. We do want to stay in Scarborough. So that means we would have to get a facility between Kennedy Road and Victoria Park on a bus route, with lots of free parking, available on a Thursday night, a bit bigger than what we have, but not much more expensive. A tall order!

The City charges lower rates for a location if members of the organization are all either Juniors or Seniors. However, we want to be a Club that is open to all members no matter what their age is. So this is a challenge that we have to deal with. I think we can use Goodlad for a while longer, but I will keep in contact with the City to see if anything comes available.

Next year will be the 50th anniversary of the Scarborough Chess Club. So we would like this to be a memorable year and recognized in the chess world. The Executive will meet before the next Annual Meeting to discuss plans. If anyone has any ideas on this, please let me know. I will continue to keep you posted on the “ President’s Perspective “.

Maurice Smith  
President  
Scarborough Chess Club

## **Ontario Chess Association 2009 Annual General Meeting – May 23**

( posted on ChessTalk by Michael von Keitz, OCA Secretary )

Will be held at Kitchener City Hall in Kitchener, ON

On Saturday May 23, 2009, starting at 10:00 am.

Agenda, Reports and Motions will be distributed in advance.

Feel free to observe some OYCC games while you are here!

## **FIDE Presidential Board meeting 1st quarter 2009**

The PB approved the new structure for FIDE Commissions and Committees the details of which will be announced on the FIDE website.

The PB agreed on a commission to be set up to consider the zonal structure of FIDE.

( from Susan Polgar Blog )

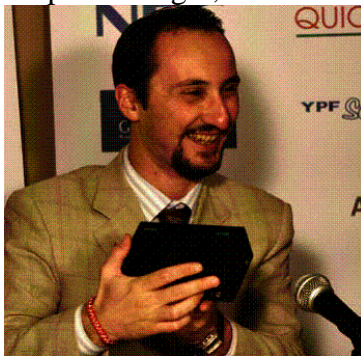
Is this the harbinger of the battle of Canada as a zone?? There has been some pressure on FIDE in recent years to take away Canada's zonal status – we are one of the few countries which are a single country zone. We'll see.

## **April 1, 2009 FIDE Rating List**

There is once again one player over 2800 – Veselin Topalov. [ Garry Kasparov ( Russia ), 13<sup>th</sup> World Champion, now retired, was the first player to break 2800 ( highest rating ever in July 1999 – 2851 ); Vladimir Kramnik ( Russia ), 14<sup>th</sup> World Champion, was the second player; Veselin Topalov ( Bulgaria ), the 2005 FIDE World Champion, was the third; Viswanathan Anand, current world champion, was the fourth player in history to break the 2800 barrier ].

There are 30 players in the 2700's. Some of the top players are ( birth date of younger players ( 22 yrs. & younger ) in brackets, after country ) :

# 1 : Veselin **Topalov** ( Bulgaria ), 2005 FIDE World Champion, 2006 World Championship Challenger, and 2010 Challengers' Match participant, at 2812;



# 2 : Viswanathan **Anand** ( India ), 15<sup>th</sup> and current World Champion, rated 2783 ( down 8 pts. );



# 3 : Magnus **Carlsen** ( Norway - 1990 ), rated 2770;



# 4 : Vladimir **Kramnik** ( Russia ), 14<sup>th</sup> World Champion, rated 2759;



# 5 : Teimour **Radjabov** ( Azerbaijan – 1987 ), rated 2756;

# 6 : Levon **Aronian** ( Armenia ) – rated 2754;

# 7 : Dmitry **Jakovenko** ( Russia ), rated 2753;



- # 8 : Alexander **Morozevich** ( Russia ), rated 2751 ( down 20 pts. );
- # 9 : Peter **Leko** ( Hungary ), 2004 World Championship Challenger, at 2751;
- # 10 : Alexander **Grischuk** ( Russia ), rated 2748 ( first time back in the top 10 in a while );
- # 37 : Judit **Polgar** ( Hungary ), the strongest women's player in the world, with 2693 ( a number of years ago, she was in the top 10 ! );

Some other past World Champions/FIDE World Champions and their current ratings are :

- # 19 : 2002 FIDE World Champion, Ruslan Ponomariov ( Ukraine ) at 2726;
- # 35 : 2004 FIDE World Champion, Rustam Kasimdzhanov ( Uzbekistan ) at 2695;
- # 86 : 12<sup>th</sup> World Champion, Anatoly Karpov ( Russia ) – 2644 ;

Here are a number of the younger ( 22 yrs. & younger ) players, not in the top ten, we're watching ( birth date in brackets after country )[ note: juniors = U 20 yrs. as of Jan. 1 ]

- # 13 : Yue Wang ( China – 1987 ) – 2738;
- # 23 : Sergey Karjakin ( Ukraine – 1990 ) – 2721 ( up 15 pts. );
- # 30 : Hikaru Nakamura ( USA – 1987 ) – 2701 ( first time over 2700 );
- # 33 : Hao Wang ( China – 1989 ) – 2696 ( up from # 38 );
- # 41 : Nikita Vitugov ( Russia – 1987 ) – 2688.

The 5 highest FIDE rated Canadians ( active in the last 24 months, internationally or in Canada ) are:

- # 1 : GM Kevin **Spraggett**, 5 times Canadian Champion ( last in 1996 ), at 2601 ( has broken the 2600 barrier again - up 15 pts ) – now playing out of Portugal;



# 2 : GM Mark **Bluvshtein** ( 1988 ) at 2558;



( from David Cohen's Canadian Chess website )

# 3 : GM Pascal **Charbonneau**, 2002 & 2004 Canadian Champion, at 2505 – now working in USA;



( from CFC Website )

# 4 : IM Thomas **Roussel-Roozman** ( 1988 ) at 2479.

# 5 : IM Igor **Zugic**, 2006 Canadian Champion, at 2462.

The current 2007 Canadian Champion, 17 year old IM Nikolay **Noritsyn** ( 1991 ), is rated 2381 .

Canada has 3 inactive GM's : Alexander **Le Siege**; Duncan **Suttles**; Dimitri **Tyomkin**.

Canadian GM's with other federations are : GM Anton **Kovalyov** ( Argentina ) at 2571; GM Bator **Sambuev** ( Russia ) at 2498.

The top 5 women in the world are :

# 1 : GM Judit **Polgar** ( Hungary ) – 2693 ( first woman player in history to break 2700 );



# 2 : GM Humpy Koneru ( India – 1987 ) – 2612 ( second woman over 2600 );



# 3 : WGM Yifan Hou ( China – 1994 ) – 2590 ( 15 years old ! – up 19 pts. ).



# 4 : GM Antoaneta Stefanova ( Bulgaria ) – 2549;

# 5 : GM Nana Dzagnidze ( Georgia ) – 2541.

The current Women's World Champion, GM Alexandra Kosteniuk ( Russia )



is # 11 at 2516.

The top 5 FIDE rated Canadian women players are ( active in the last 24 months,  
internationally or in Canada ) :

# 1 : WFM Yuanling **Yuan** ( 1994 - SCC member ! ) at 2203 ;.



# 2 : WIM Nava **Starr**, 8 time Canadian Women's Champion ( last in 2001 ), at 2173.



( from David Cohen's Canadian Chess website )

# 3 : WIM Natalia **Khoudgarian**, 2006 & 2007 Canadian Women's Champion, at 2137  
( down 12 pts. ).



( from CFC Website )

# 4 : WFM Dina **Kagramanov**, 2006 & 2007 Canadian Women's Championship  
 Runner-Up, at 2093 ( down 28 pts. );

# 5 : Anastasia **Kazakevich** ( 1988 ) at 2049..

There are 4 inactive Canadian WIM's : Vesma **Baltgailis**; Johanne **Charest**;  
 Dinara **Khaziyeva**; Smilja **Vujosevic**.

The highest FIDE-rated Canadian woman is WFM Valeriya **Gansvind**, at 2231,  
 who plays for another federation - Estonia.

### Friday, April 3 – A Significant Anniversary

34 years ago, on April 3, 1975, FIDE made Bobby Fischer an ex-world  
 champion ! It declared Anatoly Karpov, the intended title challenger, the new World  
 Champion. Karpov then reigned until his defeat in the mid-'80's by Garry Kasparov.

### Reykjavik Open, Iceland

The Reykjavik Open took place 24th March - 1st April 2009. It was a 9-round  
 swiss. Canadian Olympiad team member, Thomas Roussel-Roozman, played and finished  
 tied for fifth, only ½ pt. back of the winners. Congratulations Thomas !

Here were the top finishers ( from official website ):

| <i>Final Ranking after 9 Rounds</i> |   |   |                     |             |            |      |      |       |      |    |        |
|-------------------------------------|---|---|---------------------|-------------|------------|------|------|-------|------|----|--------|
| Rk.                                 |   | Name                                      | FED                 | Rtg         | Pts.       | TB1  | TB2  | TB3   | Rp   | K  | rtg+/- |
| 1                                   |  | GM <a href="#">Steingrimsson Hedinn</a>   | <a href="#">ISL</a> | 2547        | 7,0        | 51,0 | 39,5 | 39,25 | 2673 | 10 | 14,5   |
| 2                                   |  | GM <a href="#">Kryvoruchko Yuriy</a>      | <a href="#">UKR</a> | 2604        | 7,0        | 51,0 | 39,5 | 38,25 | 2674 | 10 | 8,5    |
| 3                                   |  | GM <a href="#">Stefansson Hannes</a>      | <a href="#">ISL</a> | 2563        | 7,0        | 49,0 | 38,5 | 37,50 | 2667 | 10 | 12,2   |
|                                     |  | GM <a href="#">Marin Mihail</a>           | <a href="#">ROU</a> | 2556        | 7,0        | 49,0 | 38,5 | 37,50 | 2654 | 10 | 12,1   |
| 5                                   |  | GM <a href="#">Areshchenko Alexander</a>  | <a href="#">UKR</a> | 2673        | 6,5        | 53,0 | 42,5 | 37,50 | 2617 | 10 | -4,0   |
| 6                                   |  | GM <a href="#">Shulman Yuri</a>           | <a href="#">USA</a> | 2639        | 6,5        | 51,0 | 39,5 | 35,00 | 2627 | 10 | 0,4    |
| 7                                   |  | IM <a href="#">Vocaturro Daniele</a>      | <a href="#">ITA</a> | 2445        | 6,5        | 50,5 | 40,0 | 33,75 | 2642 | 10 | 24,6   |
| 8                                   |  | IM <a href="#">Roussel-Roozman Thomas</a> | <a href="#">CAN</a> | <b>2479</b> | <b>6,5</b> | 44,5 | 34,5 | 31,25 | 2536 | 10 | 7,9    |
| 9                                   |  | IM <a href="#">Popovic Milos T</a>        | <a href="#">SRB</a> | 2400        | 6,5        | 42,5 | 32,5 | 29,00 | 2471 | 10 | 13,4   |
| 10                                  |  | IM <a href="#">Shytaj Luca</a>            | <a href="#">ITA</a> | 2453        | 6,5        | 42,0 | 32,5 | 29,00 | 2486 | 10 | 5,     |

## Rick's Chess Trivia

( questions/presentations researched by Rick Garel,



former SCC Executive, former SCC member, Orillia CC President )

**Today's Question** is: What very famous actor at one time was a chess hustler? He actually drew a game against Reshevsky in a simul!

You can use any resource available to answer the question ! Just find it fast and send it in as fast as you can, by e-mail, to Rick : [rickgarel@gmail.com](mailto:rickgarel@gmail.com) .

The first correct e-mail received wins, and gets bragging rights. Also, we will publish the honoured winner's name in the next newsletter, along with a few details they provide as to their chess experience ( if they wish ), along with Rick's researched answer.

Thanks for playing !!

Chess History is fun !!

Also write Rick if you have any chess trivia questions or presentations you'd like him to consider for his column. He will give credit to the author if he uses your suggestion. Write Rick Garel : [rickgarel@gmail.com](mailto:rickgarel@gmail.com)

## Toronto Closed ( Championship Section )

This tournament started Tuesday, Jan. 27 at the Willowdale CC and ran to March 31 It was a 10-player round robin – time control was game/60 min. with 30 sec. increment from move 1. The average rating of the tournament was 2229 ( ranging from 2375 to 2051 ).

The winner was FM Michael Barron who finished with an impressive 7/9 pts.. Second , ½ pt. behind, was junior master Roman Sapozhnikov.

The final standings were:

1. Michael Barron - 7 points
2. Roman Sapozhnikov - 6.5
3. Liam Henry - 6
- 4-5. Ruperto Frilles and David Peng - 5
- 6-7. Wajdy Shebetah and Michael Kimelman - 4
8. Arthur Calugar - 3.5
9. Nikita Gusev - 3
10. Geordie Derraugh - 1

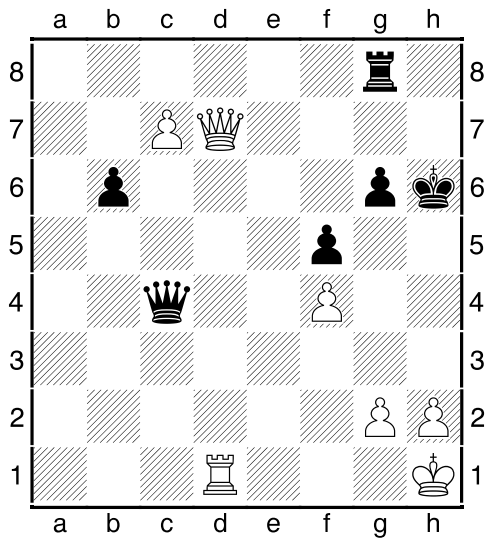
An interesting game occurred in Rd. 8 between Michael Barron, the winner, and Arthur Calugar. Here is the game, with annotations by Michael Barron, and Bob Armstrong ( using Fritz ):

### **Barron, Michael (2344) – Calugar, Arthur (2226) [B59]**

Toronto Closed Championship Willowdale C C, Toronto (8), 17.03.2009

**1.e4=** 0.20 **1...c5±** [1...e5= for Fritz, the only equalizing move; for all other normal replies, W is given a " slight " advantage. This evaluation is not generally accepted.] **2.Nf3 Nc6 3.d4 cxd4 4.Nxd4 Nf6 5.Nc3 d6 6.Be2 e5 7.Nb3 Be7 8.0-0 0-0 9.f4?!=** [9.Be3 a5 10.Nd2 d5±] **9...a5 10.a4** [10.Bd3 a4 11.Nd2 exf4 12.Rxf4 d5=; 10.Be3 a4 11.Nd2 exf4 12.Rxf4 d5=] **10...Nb4** [10...Qb6+ 11.Kh1 Nb4 12.g4 h6=] **11.Bf3?!±** for the first time in the game, Arthur gets the advantage. [11.Be3 Be6 12.Kh1 Rc8=] **11...b6?±** [11...Qb6+ 12.Kh1 Be6 13.f5 Bc4 14.Be2 d5±; MB: it's a root cause of the difficulties later in the game – the regular move is 11...Be6 , for example: 12.f5 Bc4 13.Be2 Qb6+ 14.Kh1 Rfc8 15.Bxc4 Rxc4 16.Qe2 Rac8 17.Bg5 h6 18.Bxf6 Bxf6 19.Rad1 Kf8= with equal game (Jacques LaBelle – Robert Zuk, 0-1, Toronto ch–CAN, 1972)] **12.Be3 Bb7?!±** Michael gets a " clear " advantage [12...Be6 13.Rc1 Qc7±] **13.Rf2?!±** [13.Qd2 d5 14.exd5 Nfxd5 15.Nxd5 Bxd5 16.fxe5 Bxb3 17.Qxd8 Raxd8 18.cxb3 Bc5 19.Bxc5 bxc5±] **13...Bc6** [13...Rc8 14.Rd2 Qc7±] **14.Rd2** [14.Qe2 Qc7 15.Re1 Rac8±] **14...Qc7 15.Nd5 Bxd5?!±** [15...Nbx5 16.exd5 exf4 17.Bxf4 Bd7±] **16.exd5 e4 17.Be2 Nd7?!+-** [17...Qb7 18.c4 Nd7±; MB: I calculated variation 17...Nbx5? 18.Rxd5 Nxd5 19.Qxd5 Qxc2 20.Bc4 Rac8 21.Rc1 Qxb2 22.Qxe4± with big advantage for white] **18.c3 Na6 19.Nd4 Ndc5 20.Nc6 Bf6 21.Bd4?!±** [21.Rb1 Qd7 22.g4 h6+-] **21...Nb8?+-** [21...Bxd4+ 22.cxd4 Nd3 23.Rc2 Qd7 24.Bxd3 exd3 25.Qxd3 Rfe8±] **22.Bxf6 Nxc6 23.dxc6 gxf6 24.Bc4!** [MB: Arthur was hoping for 24.Rxd6 Rad8 25.Rxd8 Rxd8 26.Qe1 Qxc6= and black left all the troubles behind] **24...Rad8 25.Qg4+ Kh8 26.Qf5 Qe7** 3.31 [26...Kg7? 27.Re1 Qc8+- 4.12] **27.Re1?!** [MB: After getting winning advantage I start playing less accurate – better was 27.b4 with the idea 27...axb4 28.cxb4 Nd3 29.Rxd3! exd3 30.Bxd3+- and white is winning due to threat Qxh7#] **27...Rde8 28.Re3?!** [MB: Again better was 28.b4 with the idea 28...Nxa4 29.Rd4! Nxc3 30.Re3 axb4 31.Rh3 and Qxh7#] **28...Rg8 29.Bd5 Rg6 30.Rde2?+-** 2.30 [30.b4 axb4 31.cxb4 Ne6+- 3.60] **30...Reg8?!** 3.10 [30...Qc7? 31.b4 Nxa4 32.Bxe4 axb4 33.cxb4 Re6+- 5.06; 30...Qa7 31.Bxe4 b5 32.axb5 Rxe4 33.Rxe4 Nxe4+ 34.Kf1 Nc5+- 2.64] **31.b4** MB: This move is still wining, but black already has some chances **31...Nxa4** 4.25 [31...Ne6? 32.b5 Qf8 33.g3 h6 34.Qxe4 Qc8+- 8.33] **32.Bxe4 axb4 33.cxb4 d5! 34.Bxd5?+-** 3.38 [34.Qxd5 Qxb4 35.Bxg6 Nc3 36.Rxc3 Qxc3 37.Bc2 Qa1+ 38.Kf2 Qc3+- 9.68] **34...Qxb4 35.Bxf7** Michael goes up a P **35...Nc3 36.Bxg6 Nxe2+ 37.Rxe2 Qd4+** 5.75 [MB: Doesn't leave any chances for black 37...Qd6 38.Re8 Qxc6 39.Rxg8+ Kxg8 40.Bxh7+ Kf8+- 4.91] **38.Rf2?+-** 1.79 [MB: I was afraid of playing 38.Kf1! because of 38...hxg6 39.Qh3+ Kg7 40.Re7+ Kf8 missing winning move 41.Qa3!+-] **38...Qd1+ 39.Rf1 Qd4+ 40.Kh1 hxg6 41.Qh3+ Kg7 42.c7 Qc4?** 6.53 [MB: Arthur could put much more resistance with 42...f5! 43.Re1 Re8! 44.Qh4 Qc4 45.Re7+ Rxe7 46.Qxe7+ Kh6 47.h3 Qc1+ 48.Kh2 Qxf4+ 49.Kg1 Qc1+ 50.Kf2 and white still need to work very hard for the win] **43.Qd7?+-** 4.12 MB: Now white is wining without

any doubt, and could choose between several ways [43.Rd1 Qxc7 44.Rd7+ Qxd7 45.Qxd7+ Kh8+- 7.16] **43...Kh6 44.Rd1 f5** 6.89 [44...Qxf4 45.c8Q Rxc8 46.Qh3+ Kg5 47.Qxc8 f5+- 6.63]



**45.Qd8! g5+-** 23.23 [45...Qxf4 46.Qxg8 Qxc7 47.Qh8+ Qh7+- 10.91] **46.fxg5+** Michael goes up 2 P's **46...Kh5 47.h3+-** 12.13 MB: Safety first! [47.Qf6 Qc5 48.Qh6+ Kg4 49.h3+ Kf4 it is mate in 14 moves] **47...Qe6 48.Rc1+-** 9.38 MB: Black is forced to give its Rook for Pawn c7 [48.Qf6 Qxf6 49.gxf6 Rc8 50.f7 Kg6 51.Rd8 Rxd8 52.cxd8Q Kxf7+- 20.58] **48...Qe3** 16.24 [48...b5? 49.Rf1 Rxd8 50.cxd8Q Kg6+- 20.29] **49.Qd1+ Kh4 50.c8Q Rxc8 51.Rxc8+-** 16.07 Michael is up R + P **1-0**

### Under-promotion - Part 2

( Written and copyright 2009 by David Cohen )

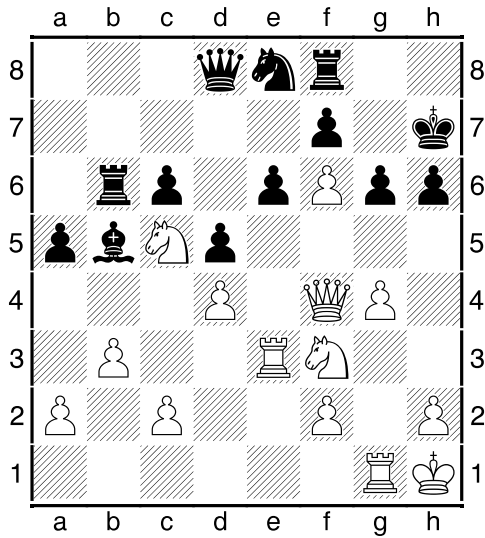
A slight twist on the theme of under-promotion. Usually, we choose a knight instead of a queen because the knight is the only other piece which can attack different squares from the queen. But in this game, White's advantage at the moment of promotion is so great, that White can choose either piece!

Stanishevsky - Nikonov, correspondence, Russia, 1992

**1. e4 c5 2. Nf3 Nc6 3. Bb5 e6 4. Bxc6 bxc6 5. d3 g6 6. O-O Bg7 7. e5 Ne7 8. Nc3 O-O 9. Ne4 d5 10. Nxc5 Nf5 11. d4 Rb8 12. Bg5 Qc7 13. b3 Rb6 14. Kh1 a5 15. Qd2 Ba6 16. Rg1 h6 17. Bf6 Bxf6 18. exf6 Kh7 19. g4 Nd6 20. Rae1 Bb5 21. Qf4 Qd8 22. Re3 Ne8**



Position after 22...Ne8



White's attack is gaining momentum. Black would like to eliminate the spearhead, the P/f6, which is cramping Black's position, as well as cutting off the communication and mobility of the defenders.

**23. Nd7 !?**

The pawn was attacked twice but only defended once, so White naturally defends it again.

**23... Qxd7**

In accepting the sacrifice, Black's queen is deflected from the attack on P/f6.

**24. Ne5**

Gaining time to clear a path for the rook along the 3rd rank.

**24... Qd8 25. Nd7**

Again!

**25... Qxd7 26. Rh3 h5**

Only move to stop mate.

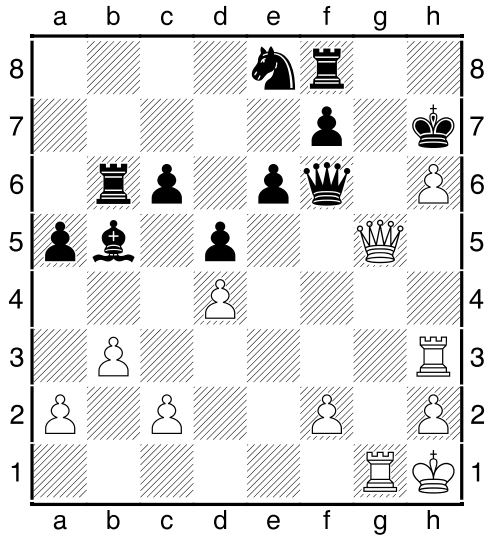
**27. gxh5 g5**

Only move to stop mate.

**28. Qxg5 Qd8 29. h6 Qxf6 ??**

Capturing the pawn at exactly the wrong moment. It's mate in 4.

If 29... Bf1 (only move to avoid the mating net.) 30. Rh5 (if 30. Rxf1 Qxf6 --) 30... Be2  
31. Rh3 (if 31. Rh4 Bf3+ --) 31... Bf1 =.



**30. Qg7+ !! Nxc7**

If 30... Qxc7 31. hxc7+ Kg8 32. Rh8#.

**31. hxc7+ Qh6**

If 31... Qh4 32. Rxc4+ Kg8 33. Rh8#; if 31... Kg8 32. Rh8#.

**32. gxf8=N+**

If 32. gxf8=Q (Normally an under-promotion to a knight is required so that it can check the king, from a square where no other piece could give check. But here Black is in such bad shape that the tempo for check is not needed!) Qxh3 33. Qg7#.

**32... Kh8**

A final deflection, from guard duty on Q/h6.

**33. Rxc4# 1-0**

## SCC – Who Are We??? ( New Feature !! )

This is a **new series** SCTCN&V is starting !! We have been asked by readers to put more SCC content into the newsletter. So a way of our doing that, is to introduce SCC members to the subscribers. Each Issue, we hope to have a different SCC member give you some information on themselves – chess profile/ some non-chess information.

We want to give a big thank you to our first SCC member who has agreed to start the ball rolling on this new feature series; this Issue we introduce you to:

### **Marcus Wilker**

There were always board games in my house, but chess didn't really stand out from checkers, cribbage, backgammon, scrabble, or anything else – until high school. Then, in grade nine at Cedarbrae C. I., I began playing every day, discovered openings, learned how to mate with bishop and knight, and started reading chess books. My hero was Aron Nimzowitsch, and I used to try to win my games like him: by positional manoeuvres and the force of a positional idea. Actually, at this point, chess *stopped* being a family game; nobody at home wanted to play with me anymore – they complained that my pieces were always protecting each other. About a year later, I joined Scarborough Chess Club. This was in 1983.

At the time, SCC was housed in a much larger space, at the Porter C. I. cafeteria (near Warden Station). As well as Thursday nights, the club was open on Sunday afternoons – when I used to go. I first found out about the club from two of my friends on the Cedarbrae chess team, **David Scott** and **John Hall**, who encouraged me to join, too. A couple of other high-school players who used to come out to SCC back then were **Bryan Lamb**, captain of the Pope John Paul team, and **Anson de Peiza**, who later transferred to Cedarbrae. There was a lot of casual chess at the club in those days, alongside the weekly tournaments. **Maurice Smith** used to have to tell the casual players on the other side of the hall to keep it down when their kibitzing, snoring, or circus-tune whistling got too raucous for the tournament players. There were weekend events at the club, too. One exciting tournament I remember was a team chess event, where players had to register in teams of four with an average team rating under 1800. My team spent a lot of time coming up with our name; it was like being in a band. That tournament was the only one of its kind, but chess is great fun as a team sport, and we should organize something like that again soon.

My first CFC rating was around 1300, it slowly moved up to around 1600, and finally pushed over 1800. When I went away to university, I played sporadically at the Guelph Chess Club, but gradually I stopped playing chess altogether. There was hardly any chess in my life for the next ten years. Then, last year, I re-joined the chess world. Actually I had already started playing chess a bit: first with students at my school – I am now a math teacher at Don Valley Academy in North York – and then with a few new chess friends at the Courense Café on Bloor Street. Still, I missed the slower games and stronger opposition I used to face playing in tournaments. So I checked the CFC club list, and found that SCC was still operating. Then I went to the SCC website and discovered that my friend **John Hall**, whom I had all but lost touch with, was playing at SCC again – and he had won a handful of recent SCC tournaments.

Getting back into chess, I'm surprised to find that my playing strength hasn't dropped off that much. In fact, my first rating update was an increase. It seems I might have learned a thing or two – about initiative, for example – during my hiatus. It could be due, in part, to a year of playing go when I was living in Vancouver. Before my break, my chess style often involved setting up convoluted tabias, no matter how many moves it took. Nothing was more satisfying than a long knight manoeuvre in a closed position. Now I prefer a more active approach where tactical shots are as important as positional trumps. (Although, If I keep dying by that gun, I may have to refine my approach.) The road back has had its highs – like my draw against master **David Krupka** in the Fall Swiss, where my rating peaked at 1870:

### **Krupka, David (2262) – Wilker, Marcus (1862) [E26]**

SCC Fall Swiss ( 1700 & Over ) Toronto, 30.10.2008

1.d4 Nf6 2.c4 e6 3.Nc3 Bb4 4.a3 Bxc3+ 5.bxc3 c5 6.e3 Nc6 7.Bd3 d6 8.Nf3 Qc7 9.Qc2 Ne7 10.0-0 e5 11.Nd2 Bd7 12.f3 Ng6 13.d5 Qc8 14.Rb1 Rb8 15.Rf2 Ng8 16.Ne4 Ke7 17.Ng3 Nh6 18.e4 Qe8 19.Nh5 Rg8 20.Be3 f6 21.Nxg7 Rxg7 22.Bxh6 Rg8 23.g3 Nf4 24.Bxf4 exf4 25.g4 Qh5 26.Rg2 Qe5 27.Kf2 Kd8 28.Rbg1 Kc7 29.h4 h6 30.h5 Rg7 31.Qd2 Rbg8 32.Ke1 Qg5 33.Qf2 Be8 34.Bf1 Ba4 35.Bd3 Qe5 36.Qd2 Qg5 37.Qf2 Qe5 ½-½

- and its lows – like my loss to 1500-rated **Michael Song** at Hart House, where my rating dropped to 1790:

### **Song, Michael – Wilker, Marcus [B16]**

Hart House Toronto, 23.02.2009

1.e4 c6 2.d4 d5 3.Nc3 dxe4 4.Nxe4 Nf6 5.Nxf6+ gxf6 6.Bc4 Bf5 7.c3 Rg8 8.Qb3 Be6 9.Bxe6 fxe6 10.Qxb7 Qb6 11.Qxa8 Qc7 12.g3 Kf7 13.Bf4 e5 14.dxe5 fxe5 15.Be3 Nd7 16.Qxa7 Qxa7 17.Bxa7 c5 18.Rd1 Ke8 19.b4 1-0

But it seems that, more or less, I've picked up from where I left off.

One huge weakness I've found in my game is my opening knowledge. I feel anxious at the beginning of every game, and frequently find myself struggling to recover from an opening disadvantage – or ending up on the wrong side of a miniature. So I've been studying openings. With a full-time job and a six-year-old daughter whom I see every other weekend, there is not as much time for chess study as there used to be. My method had been to try to predict my probable pairing in advance, look at as many of my opponent's games as I can find, and prepare, as much as time allows, the one opening variation that is most likely to occur. This gives me immediate motivation, because I'm preparing a line that might arise in my next game. And even if my prediction is wrong, it's one more line I know something about.

Apart from trying to win each game, especially when it's a matter of taking revenge on an opponent who's beaten me before, I think rating is one of my chief motivations for working on my chess. My current rating goal is to reach 2000 next year, then shoot for 2200. (It's slightly more modest now than when I was a 1300 planning to become a grandmaster.) As well as playing regularly, and studying openings, I usually go over my last tournament games with the help of Fritz. And once my openings become more solid, I think I'll start working on my calculation. I would like to keep candidate moves and lines of analysis more organized while I'm playing. It's frustrating to

discover after the game that the box move at a crucial point was something I had thought about and analyzed, but somehow forgotten about – or at least that I had never carefully compared it with the line I played.

Unlike some of the members of the club, I don't follow the international chess scene much; my interest is more local. I'm glad that some of the same people are still at the club, and that there are more women (although still too few) playing chess now. I don't remember any women, and certainly no superstars like **Yuanling Yuan** at the club in the old days. It's been a bit of an adjustment to play with faster time controls – back in the day, we used to play forty-in-two with no sudden death, and games used to be adjourned – but I think the biggest difference now, compared to ten or fifteen years ago, is the role of computer analysis and computer databases in chess. Computer analysis makes it tempting to imagine the possible moves in a position standing in a hierarchy of correctness; in the old days, I used to understand move choice more in terms of taste and style. And with respect to computer databases, it seems that we're still getting used to playing chess in the Information Age. If the current publication ban remains in effect, it's something we'll have to discuss at the AGM.

I appreciate the people, like **Bob Armstrong**, who work hard to build the local chess community, and I want all the players at the club to know how much I enjoy taking a break from everything on Thursday nights to lose myself in the joys of analysis and competition that chess has always been for me. Congratulations to **Bryan Lamb** and all the others who have kept it going strong after all these years.

### **SCC 2008-9 Club Championship**

The club championship is in 3 sections this year.

The Championship Section is a 10-player round robin comprised of the top 8 rated players in the club registered – master Liam Henry, WFM/master Yuanling Yuan, master David Krupka, master John Hall, master Bryan Lamb, master Karl Sellars, expert Hugh Siddeley, and expert Andrei Moffat - along with the two winners of last year's Reserves Championship – expert Oscar Villalobos; A Class Kevin Wu. This year is exceptionally strong with 6 masters, 3 experts and 1 “A” Class player; average rating – 2157.

The Reserves are split into two. There is an Open Section, and an U 1700 Section. In the top Reserves, 31 players registered, and the roster is headed by 3 experts and a number of A Class players who were formerly experts. In the U 1700 Section, 35 players registered. The winner of the Open Reserves gains entry into next year's Championship Section, so there is something very worthwhile to play for in that section. The total of 76 players is the highest number we have had out since early in the millennium. The highest we've had out previously this 2008-9 year was 68 players for the Howard Ridout Swiss in the early Fall, 2008.

After 7 rounds, the leaders are:

Championship Section:

1<sup>st</sup>/2<sup>nd</sup> – 5.5 pts. - WFM Yuanling Yuan ( still has one outstanding game ); master John Hall  
3<sup>rd</sup> – 5 pts. – expert Andrei Moffat

Reserves – Open Section:

1<sup>st</sup>/3<sup>rd</sup> – 5.5 pts. – expert Geordie Derraugh; expert Alex Ferreira; Bill Peng

Reserves – U 1700 Section:

1<sup>st</sup>/2<sup>nd</sup> – 5.5 pts. – Dean Ward; Maurice Smith

3<sup>rd</sup> – 5 pts. – Jacob Stein

A concern has arisen, that it is not a level playing field in the Championships, where some are voluntarily handing in their games, and others are not ( the SCC policy is that the handing in of games for the database is “ voluntary “ ). Those cooperating with the club’s request to hand in games, are at a disadvantage because their games are available for opponents to use to prepare against them. But the cooperating members have no games to use against those refusing to hand in their games ( as they have the right to do ).

So the executive has decided that all games voluntarily handed in will not be immediately entered into the database. They will be held back and only entered into the database, and distributed, and some published, AFTER the tournament is over.

Therefore, no further games from the club championship will be reproduced here until the tournament has concluded.

### **A Tip on Searching for Chess Forums**

I was discussing trying to add new things to the newsletter from time to time, and SCC member Jim Roe sent this in as an addition to readers’ information:

“ Last night you mentioned you were looking for news and comments to add to your emails. Perhaps some members were not aware that these forums are available free. New posts are automatically sent to you and reply, comment, or simply read the posts.

Go to <http://ca.yahoo.com/>

Click on Groups in the left hand panel

Search for “Chess” and [ a number of ] forums are listed. “

[ thanks for the tip Jim ]

### **Express Your INNER Self !!**

Got a chess issue that has been bothering you for a while? Got a favourite chess topic that you’ve always wanted to share with other chess players? Read something in SCTCN&V that you profoundly agreed with, or maybe ( surely not ! ) disagreed with?

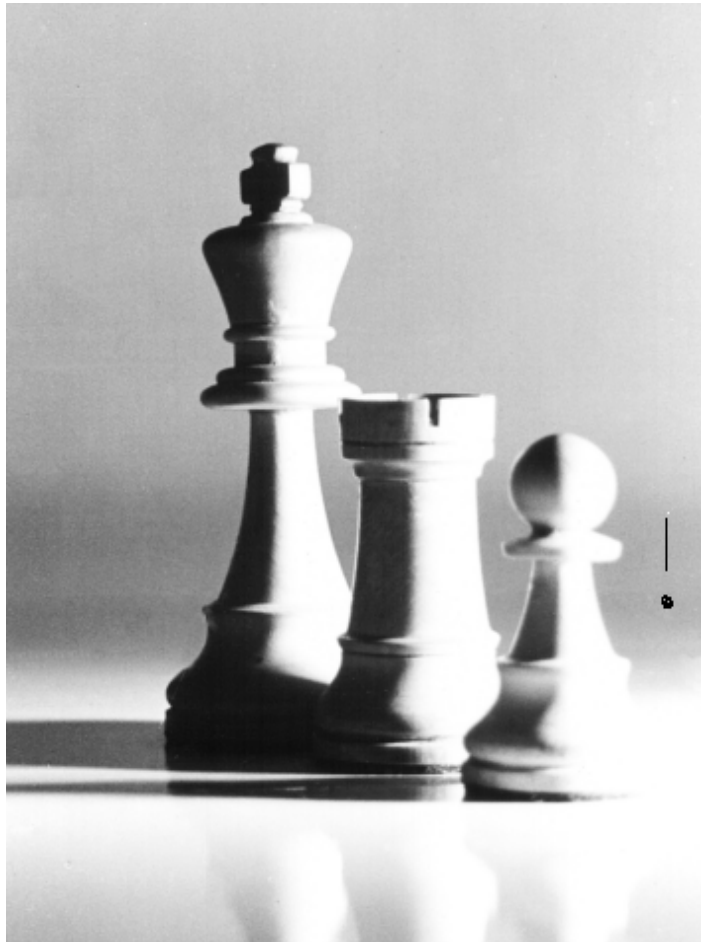
SCTCN&V may be for you. We are very open to publishing freelance articles from our readers – David Cohen, Erwin Casareno and Erik Malmsten have presented us

with material in the past. Now we have a new columnist, Rick Garel. Maurice Smith has contributed this Issue, and Josh Sherman has indicated he now has an opening article on the hoof. Maybe there's a writer inside just waiting to get going !

Also, if you would like us to cover some topic, send us your idea, and we'll see if we can write something up on it.

This may be the chance you've been waiting for ! Want to express your inner self???

### An Impressive Trio !



---

A - Members/ non-members may contact Bob Armstrong, ed. , directly, at [bobarm@sympatico.ca](mailto:bobarm@sympatico.ca) or through SCC e-mail, to :

1. Be added to the free e-mail list; 2. Submit content ( fact, opinion, criticism, recommendations! ).
- B – An item in any language may be submitted for publication, if accompanied by an English translation.  
C – The opinions expressed here are those of the editor, and not necessarily those of the Scarborough CC.  
D - To review this newsletter after it has been deleted, or some of the archived newsletters, visit our own SCTCN&V official website at : <http://scarboroughchess.webhop.net>.  
E – Please notify us if you wish to be removed from the free subscription list.